

COMUNE DI PESCIA
Microzonazione Sismica di Livello 2
Profili ESAC-Masw
Profilo ST28
Ubicazione: Molinaccio
Data: 19 aprile 2017

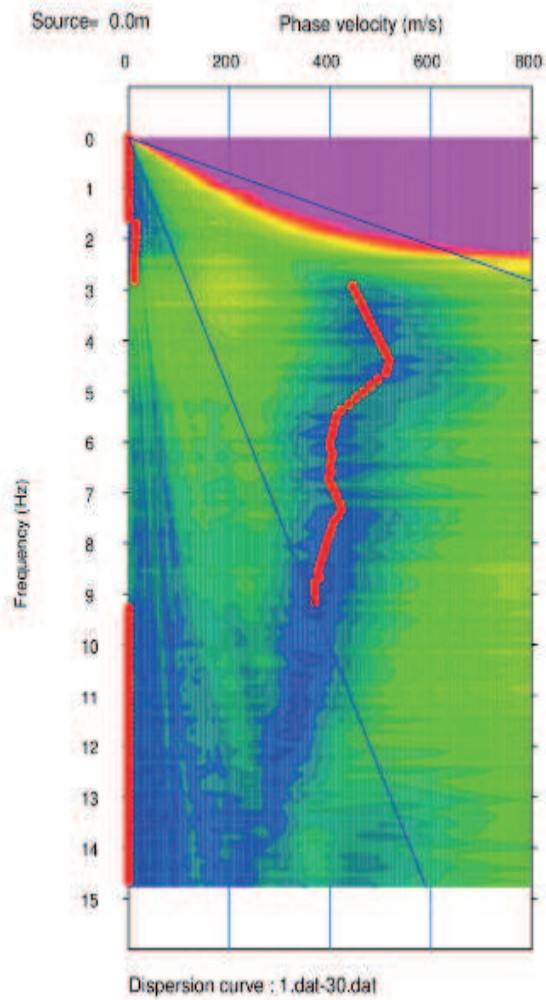
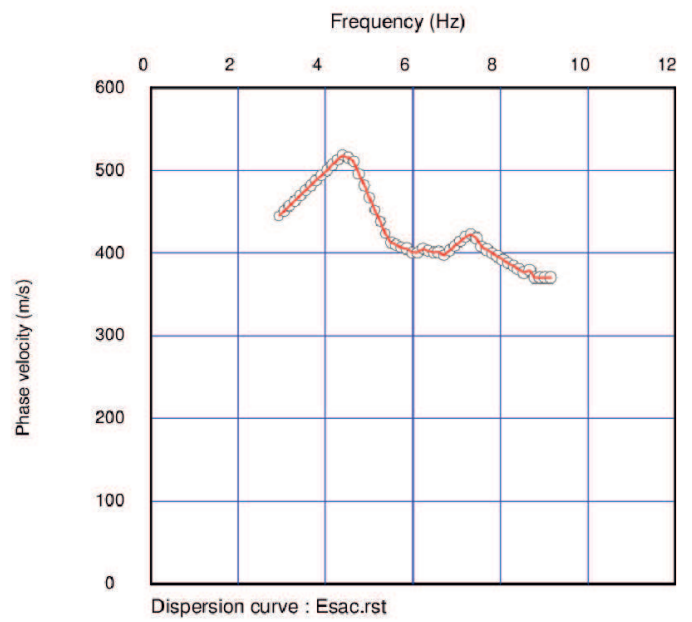


Grafico Velocità di fase-Frequenza (Esac)



Curva di dispersione (Esac)

Profilo ESAC-Masw ST28 – Molinaccio

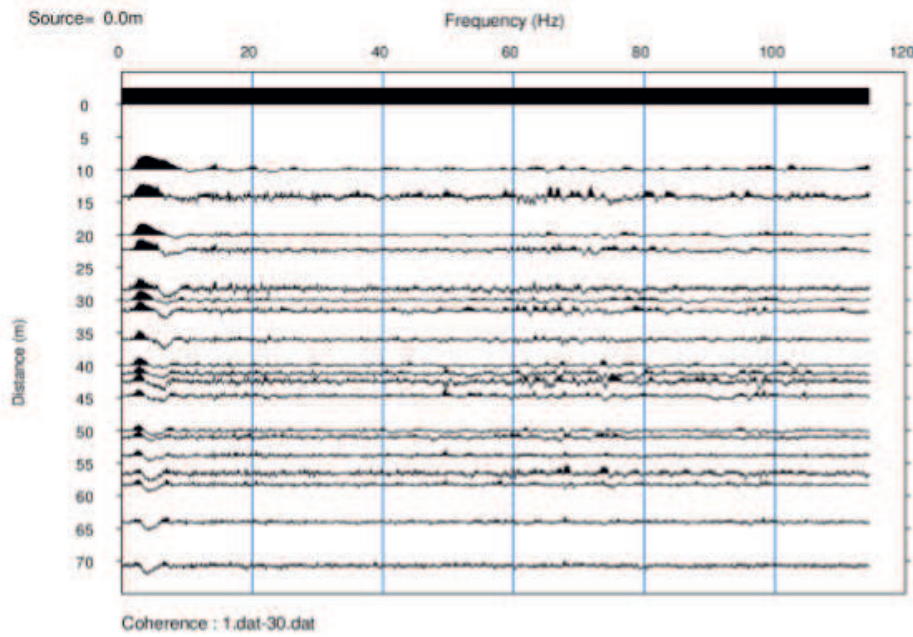


Grafico di autocorrelazione Esac

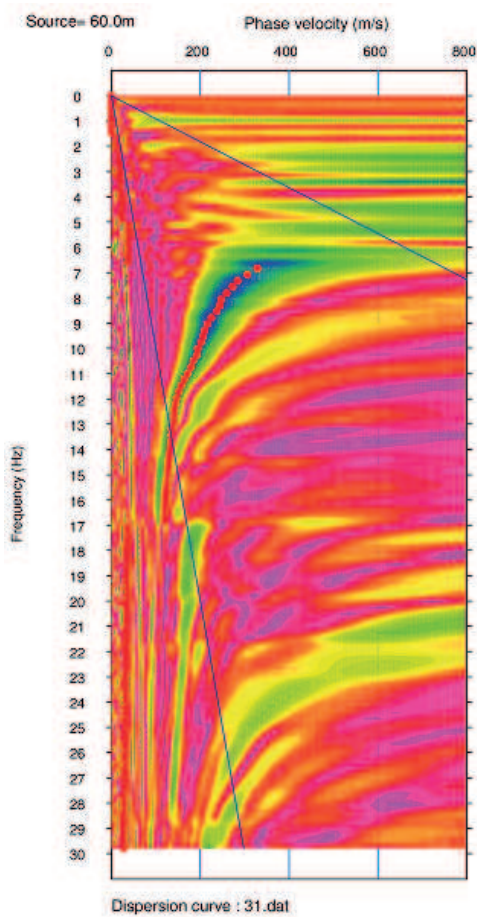
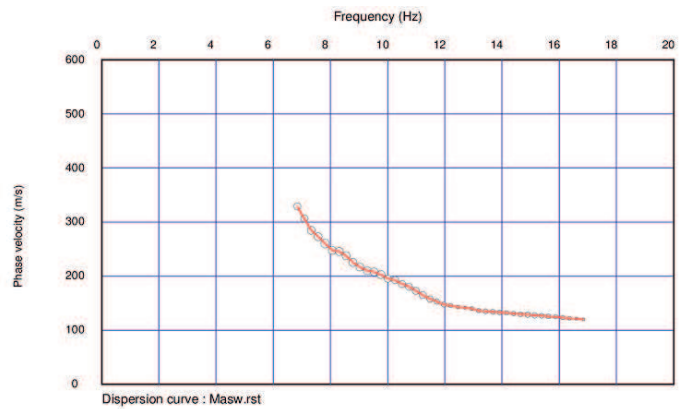
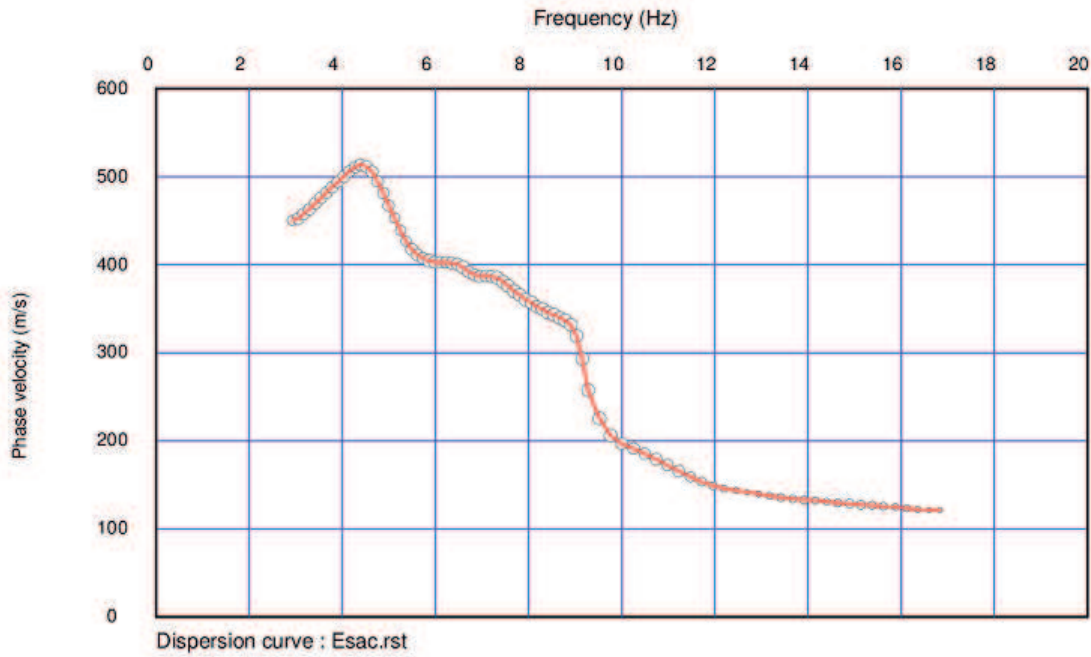


Grafico Velocità di fase-Frequenza (Masw)

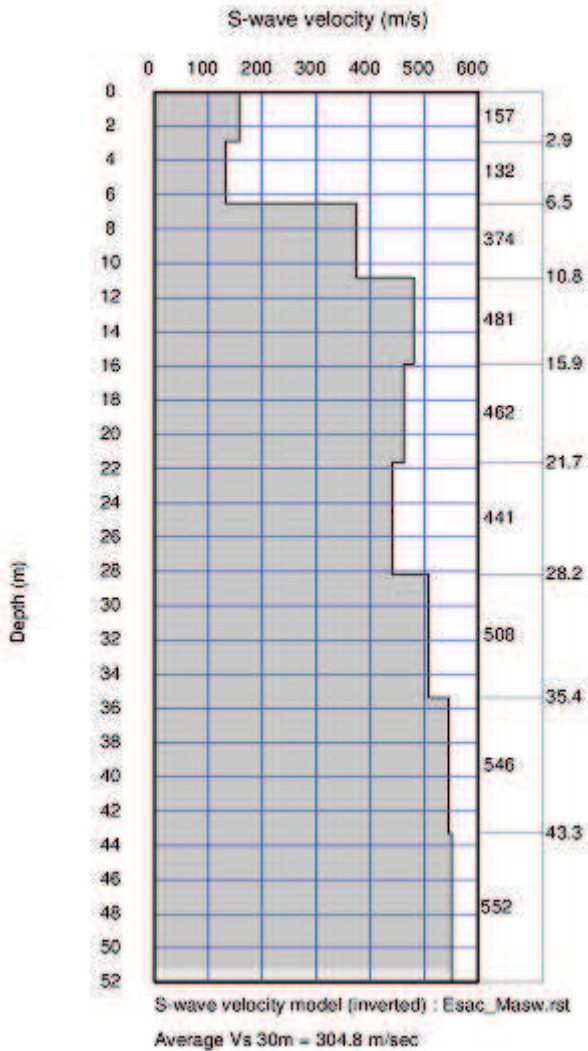


Curva di dispersione (Masw)

Profilo ESAC-Masw ST28 – Molinaccio



Curva di dispersione congiunta Esac-Masw



Ricostruzione stratigrafica indicativa
congiunta Esac-Masw