



A03 ASSETTO DEL TERRITORIO

PIANO TELEFONIA MOBILE

CARTOGRAFIA delle AREE COMPATIBILI

Assessorato Urbanistica

Responsabile

Collaborazione

Aldo Morelli

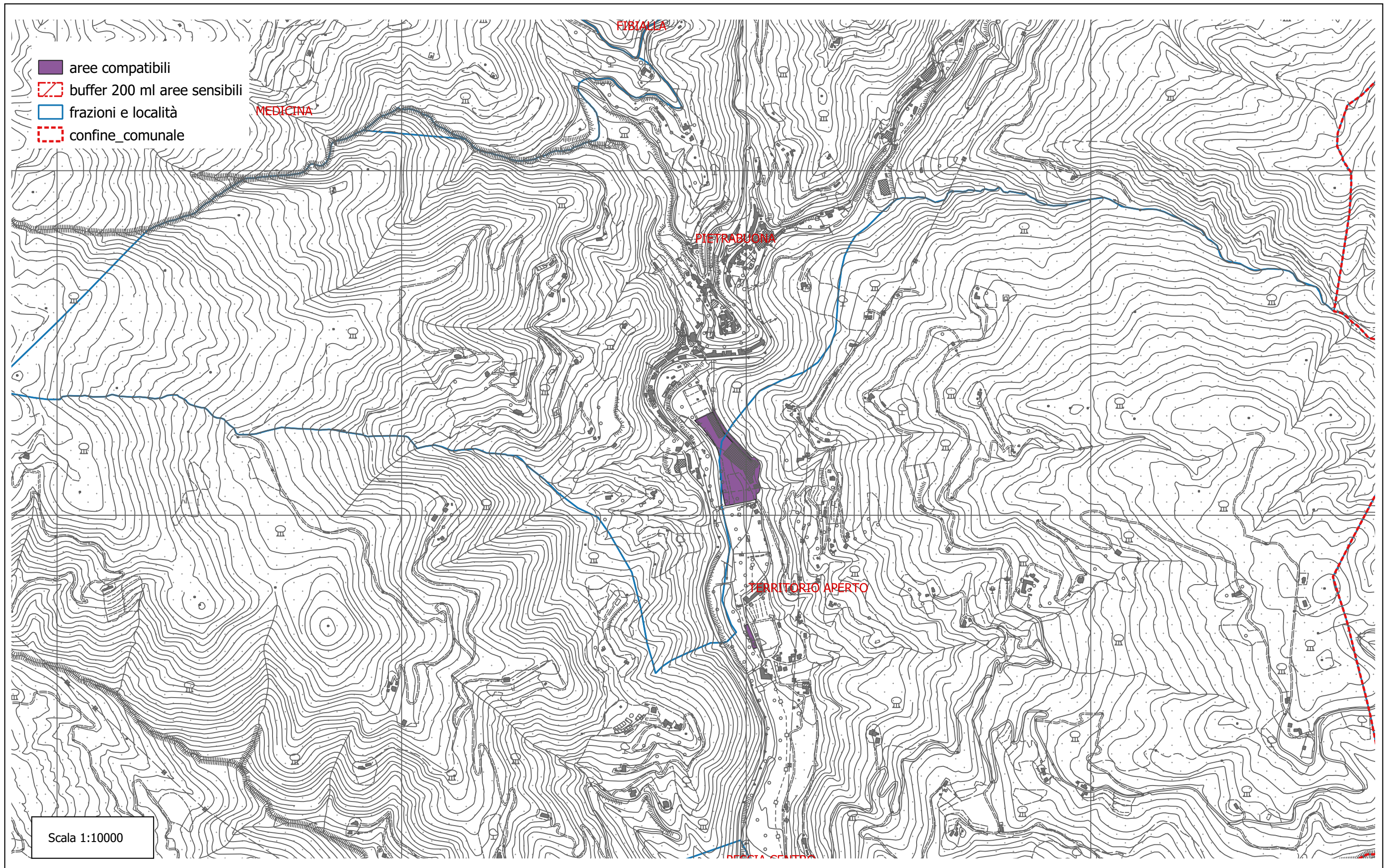
Arch. Anna Maria Maraviglia

Ufficio Assetto del Territorio

Ottobre 2020

AREE COMPATIBILI

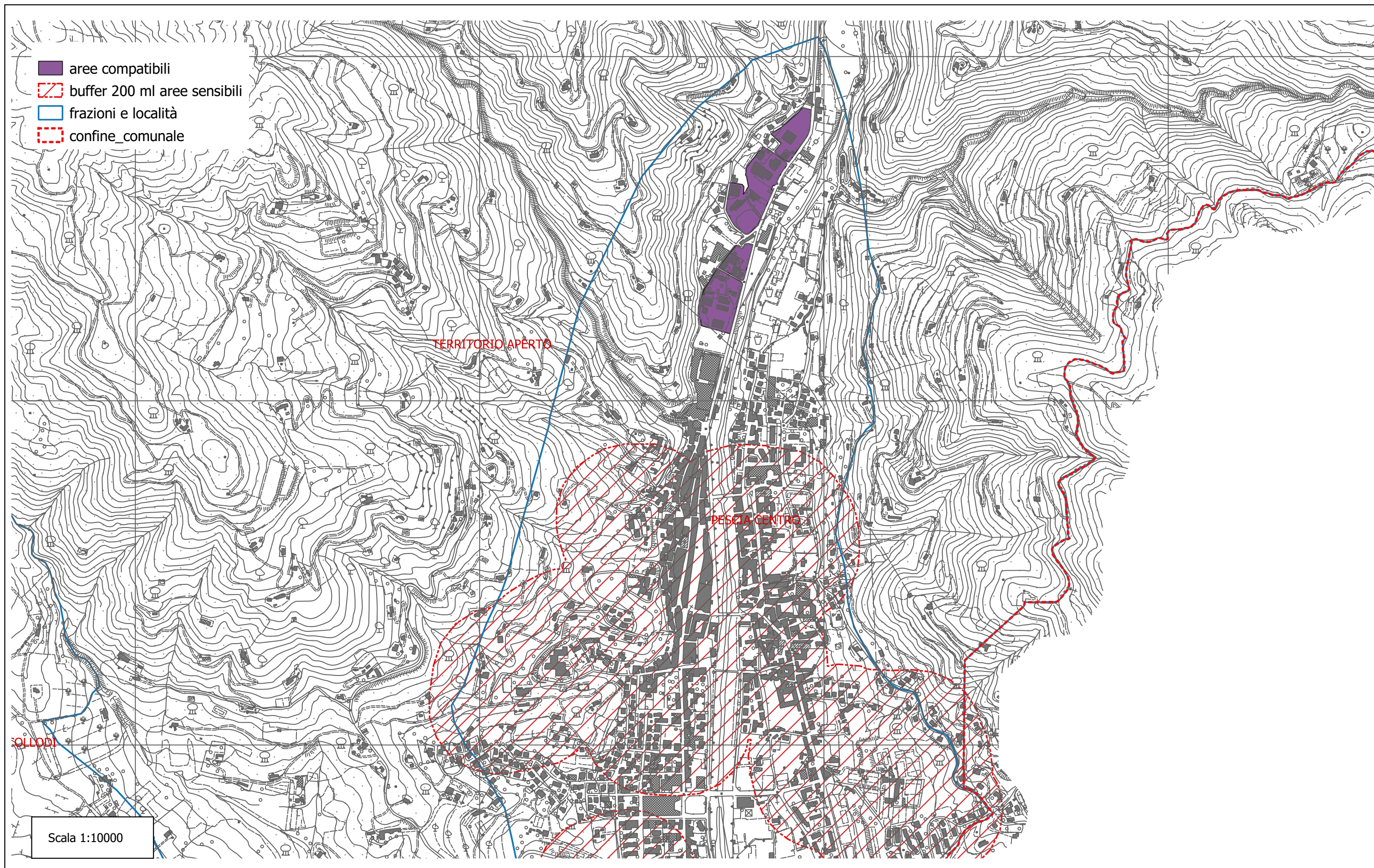
zona Pietrabuona



Scala 1:10000

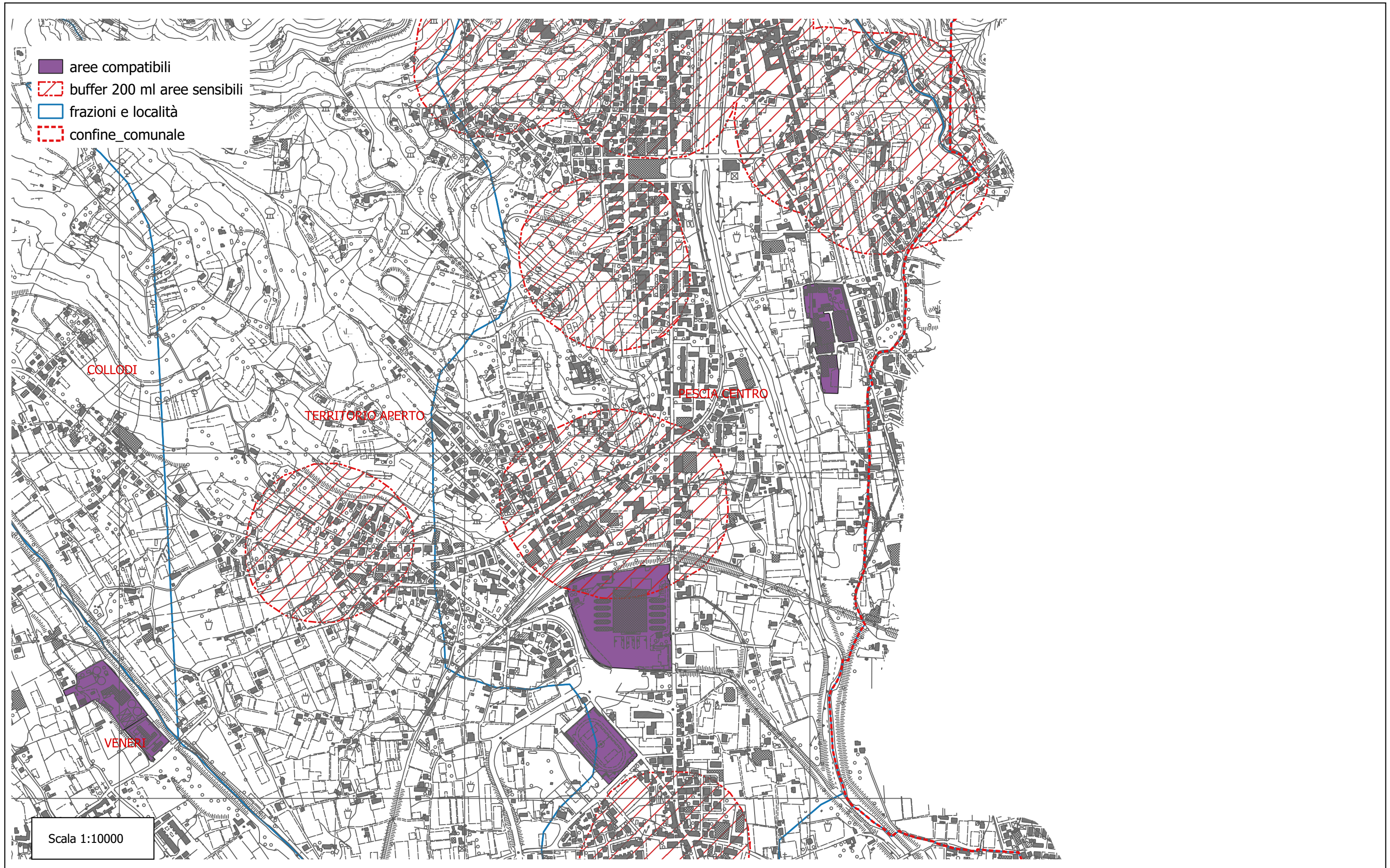
AREE COMPATIBILI

zona Pescia -nord



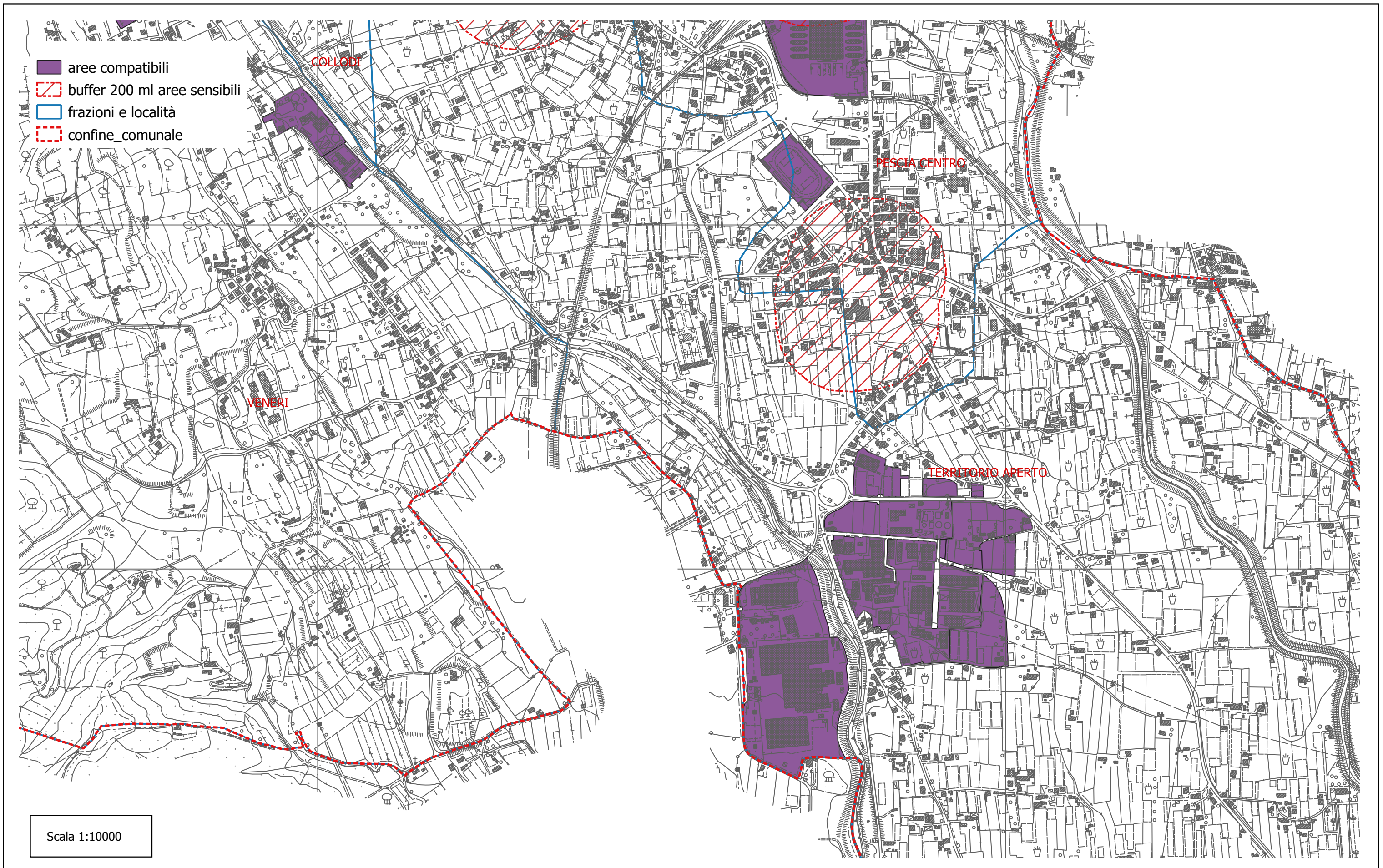
AREE COMPATIBILI

zona Pescia - sud



AREE COMPATIBILI

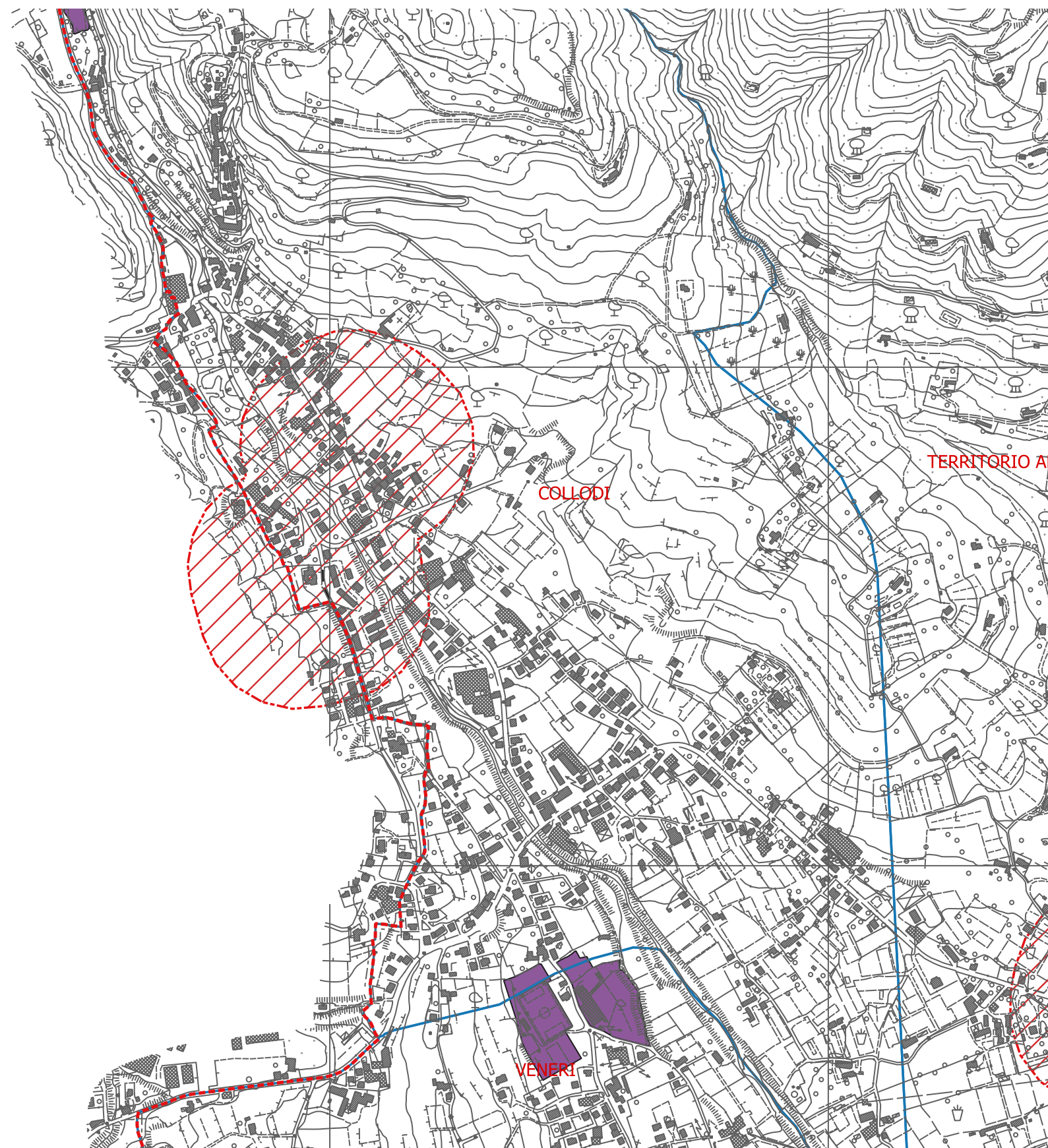
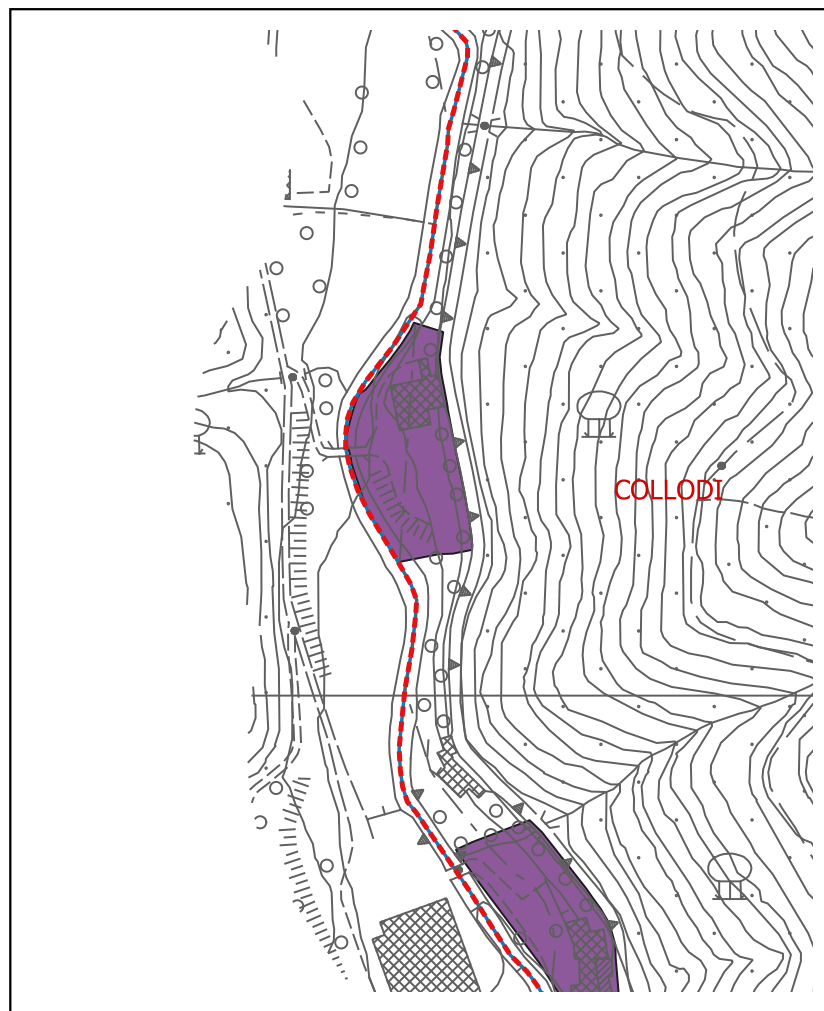
zona Alberghi - Macchie di San Piero - Veneri



AREE COMPATIBILI

zona Collodi

- aree compatibili
- ▨ buffer 200 ml aree sensibili
- ▭ frazioni e località
- ▭ confine_comunale



Scala 1:10000