

STRAND LENGTHS TABLE AT REF. TEMP. OF $-^{\circ}\text{C}$
CREEP COEFFICIENT TO BE CONSIDERED $-/1000$

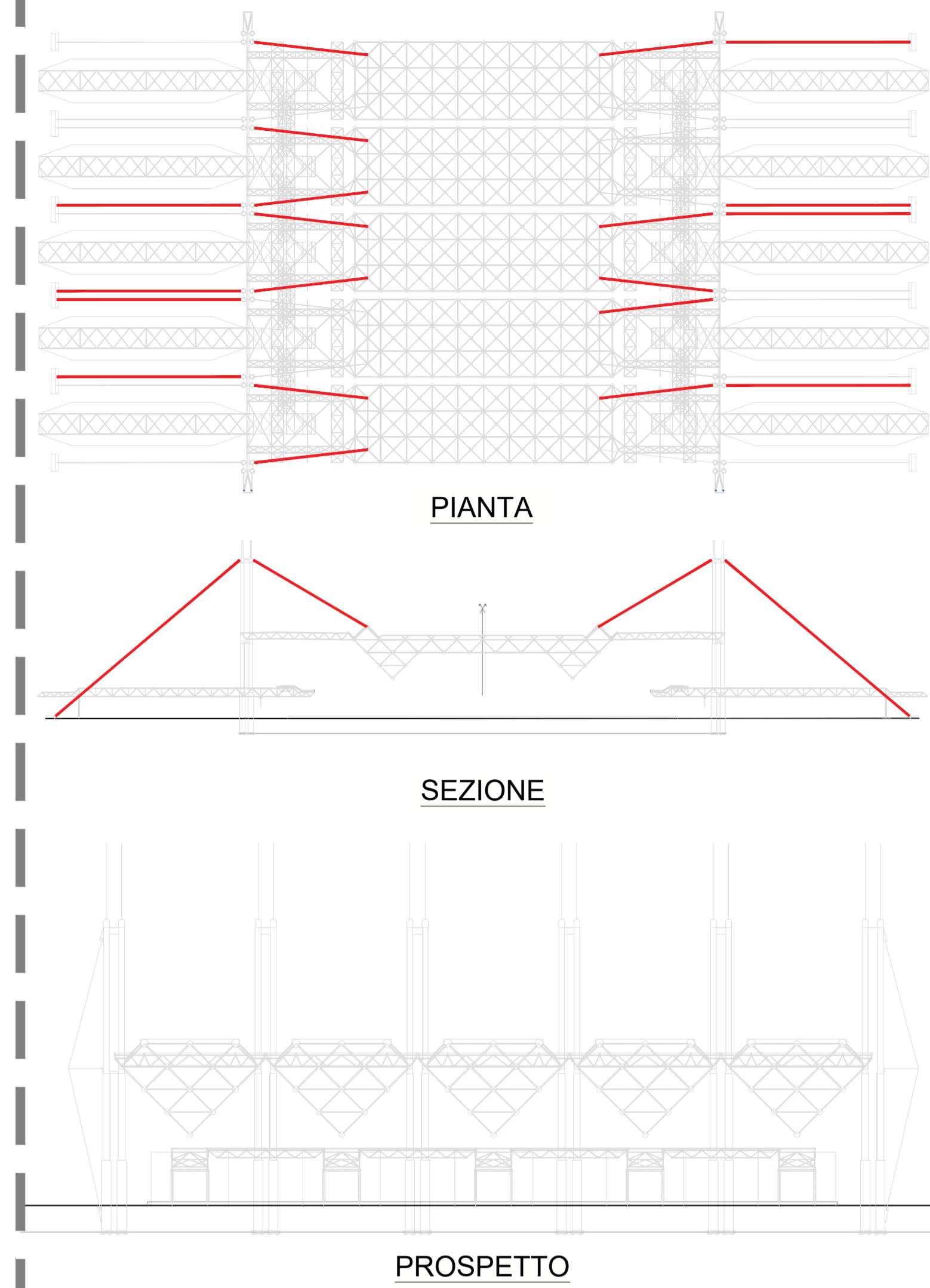
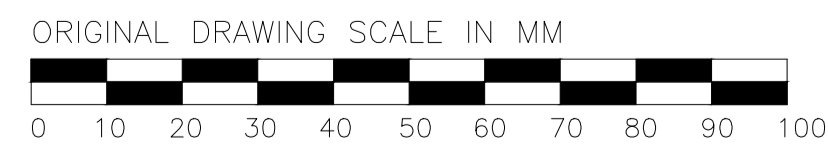
REF. DIAMETER (mm)	NOMINAL STRAND CHARACTERISTICS
	STRAND TYPE
	TIPO FLC
66	66
MINIMUM BREAKING LOAD (kN)	3950

NOTE:
* TO BE RECHECKED AND DEFINE AFTER RECEIVING
DETAIL OF EXISTING PLATES AND STEEL ANCHORAGES

NOTES:

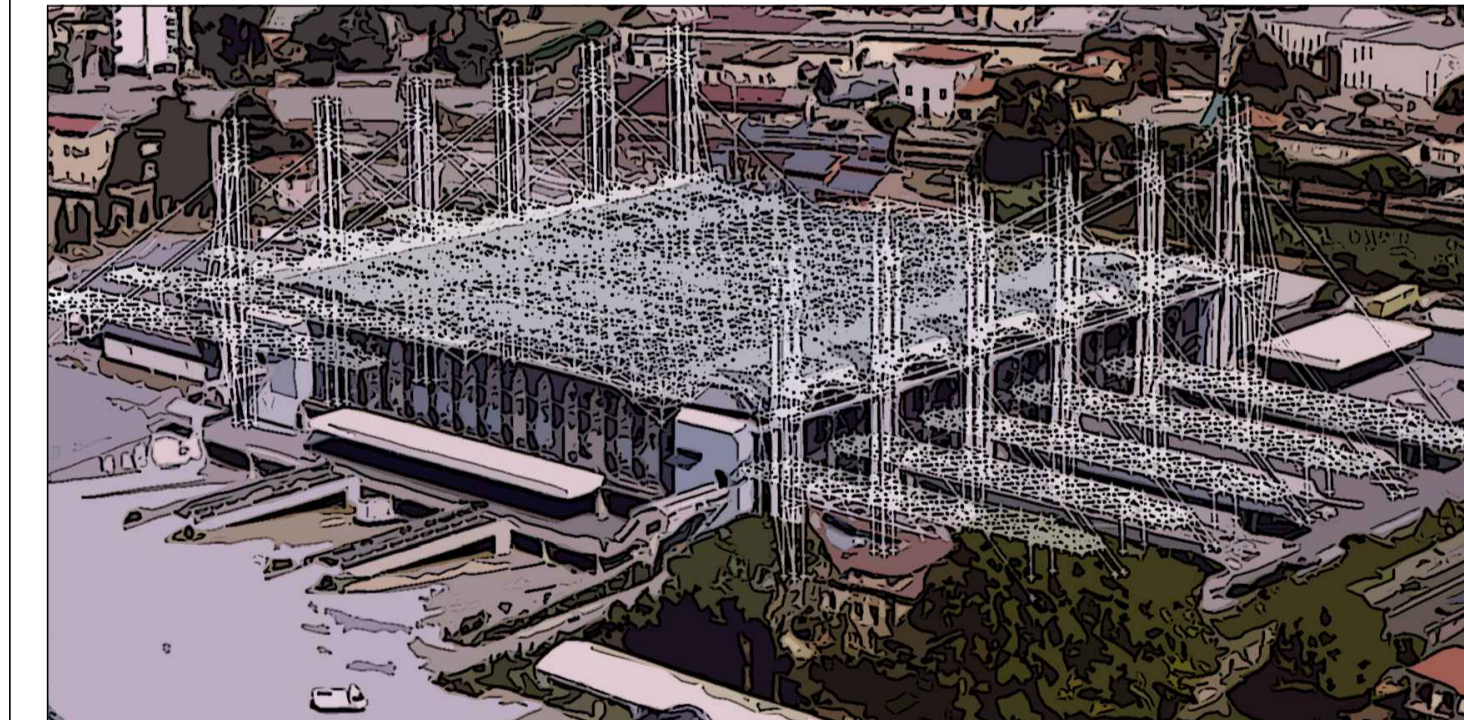
DIMENSIONS: ALL DIMENSIONS ARE IN MILLIMETERS UNLESS OTHERWISE INDICATED
ANGLES IN DEGREES (0 - 360°)
MIN. SMOOTH 1 mm IF NOT DIFFERENTLY INDICATED
GENERAL DIMENSIONS ARE WITHOUT CORROSION PROTECTION IF NOT DIFFERENTLY INDICATED
THE DIMENSION OF THE STEEL PLATE INCLUDES THE CORROSION PROTECTION
DIMENSIONS SUBJECT TO TECHNICAL MODIFICATIONS

TOLERANCES: ALL DIMENSIONS INDICATED IN THE DRAWING, UNLESS OTHERWISE INDICATED,
ARE IN COMPLIANCE WITH THE FOLLOWING NORMS:
TOLERANCES FOR CASTINGS FOLLOW THE GRADE CT 11 AS PER ISO 8062-3
TOLERANCES FOR MACHINING FOLLOW THE GRADE M AS PER EN 22768-1
THESE SPECIFIED TOLERANCES REFER ONLY TO THE DIMENSIONS QUOTED IN
THE DRAWING
THE TOLERANCES FOR DIMENSIONS NOT INDICATED IN THE DRAWING CAN BE
REQUESTED IF NECESSARY



A.O. OPERE PUBBLICHE E PROTEZIONE CIVILE
Servizio 3 - Gestione del Territorio

**INTERVENTO DI MANUTENZIONE STRAORDINARIA PER
LA MESSA IN SICUREZZA DELL'IMMOBILE DENOMINATO
MERCATO DEI FIORI - 1° STRALCIO FUNZIONALE**



PROGETTO ESECUTIVO

**TAV.S06 - STRUTTURALE - DETTAGLI SOSTITUZIONE
FUNI**

Pescia, lì 26 Giugno 2018

R.U.P.
Geom. Luciano BIANCHI

Raggruppamento Temporaneo di Professionisti

DP INGEGNERIA s.r.l.
Società di Ingegneria Civile
Via Giuseppe Garibaldi 401 - 05100 - LECCE - Tel. Fax. 0832 847070 - P.I.A. 026899489

Mandatari
Arch. Sergio MARTINELLI
Ing. Alessandro DEL TOZZOTTO
Ing. Giacomo LENCIONI
P.I. Gabriele BONOFILGLO
Ing. Francesco BARTOLI