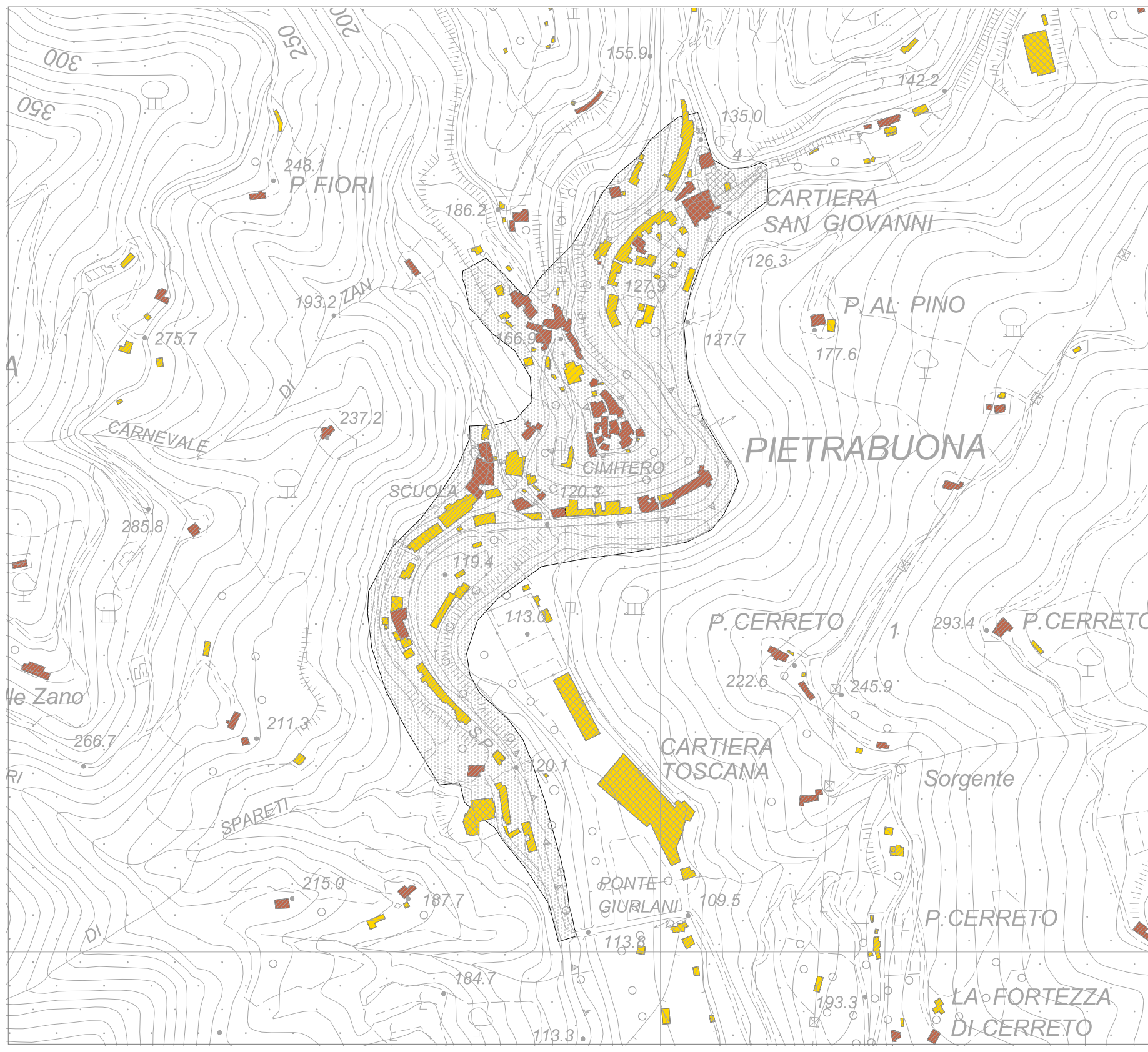
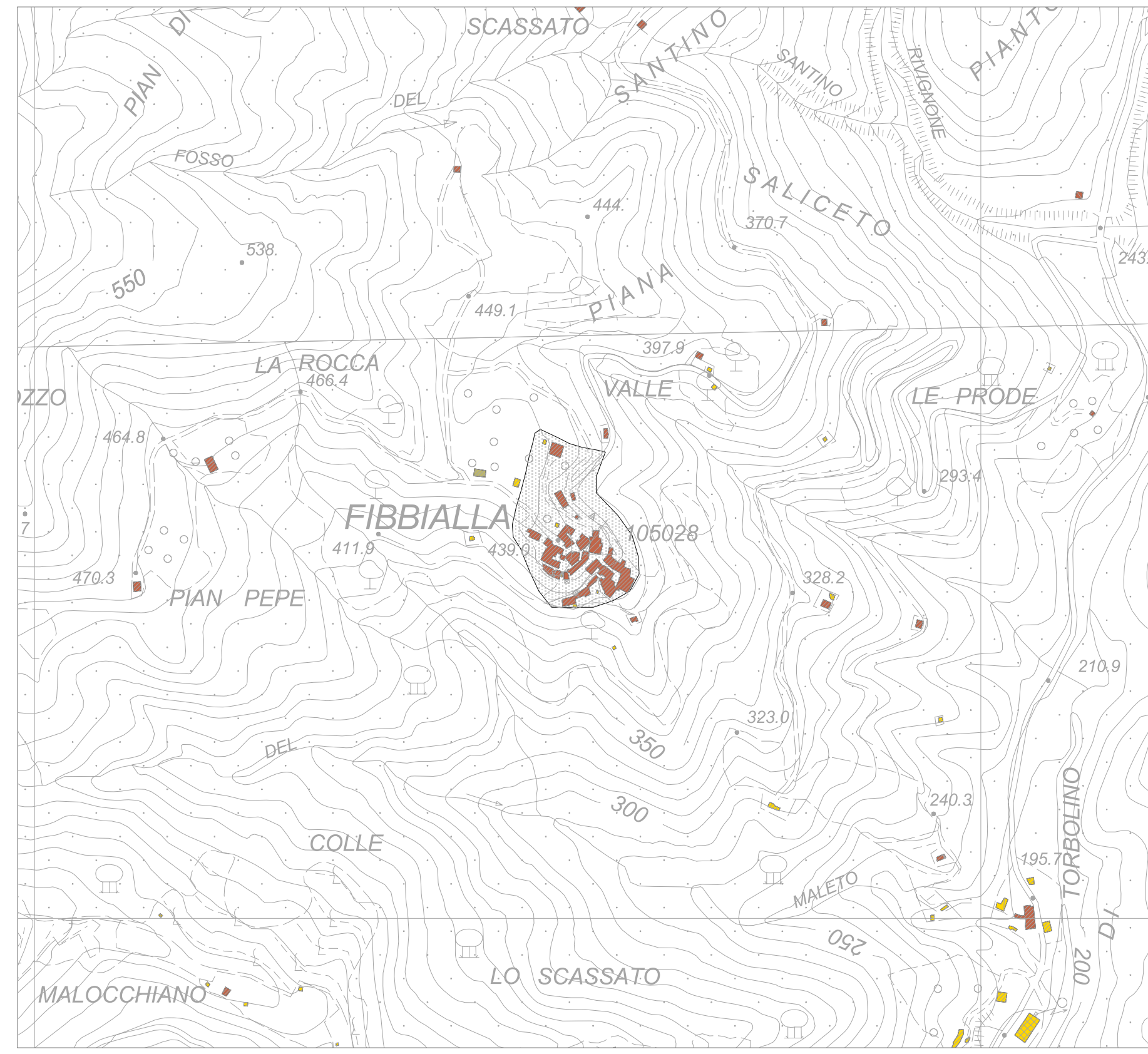


LA FORMAZIONE DEI NUCLEI ABITATIVI



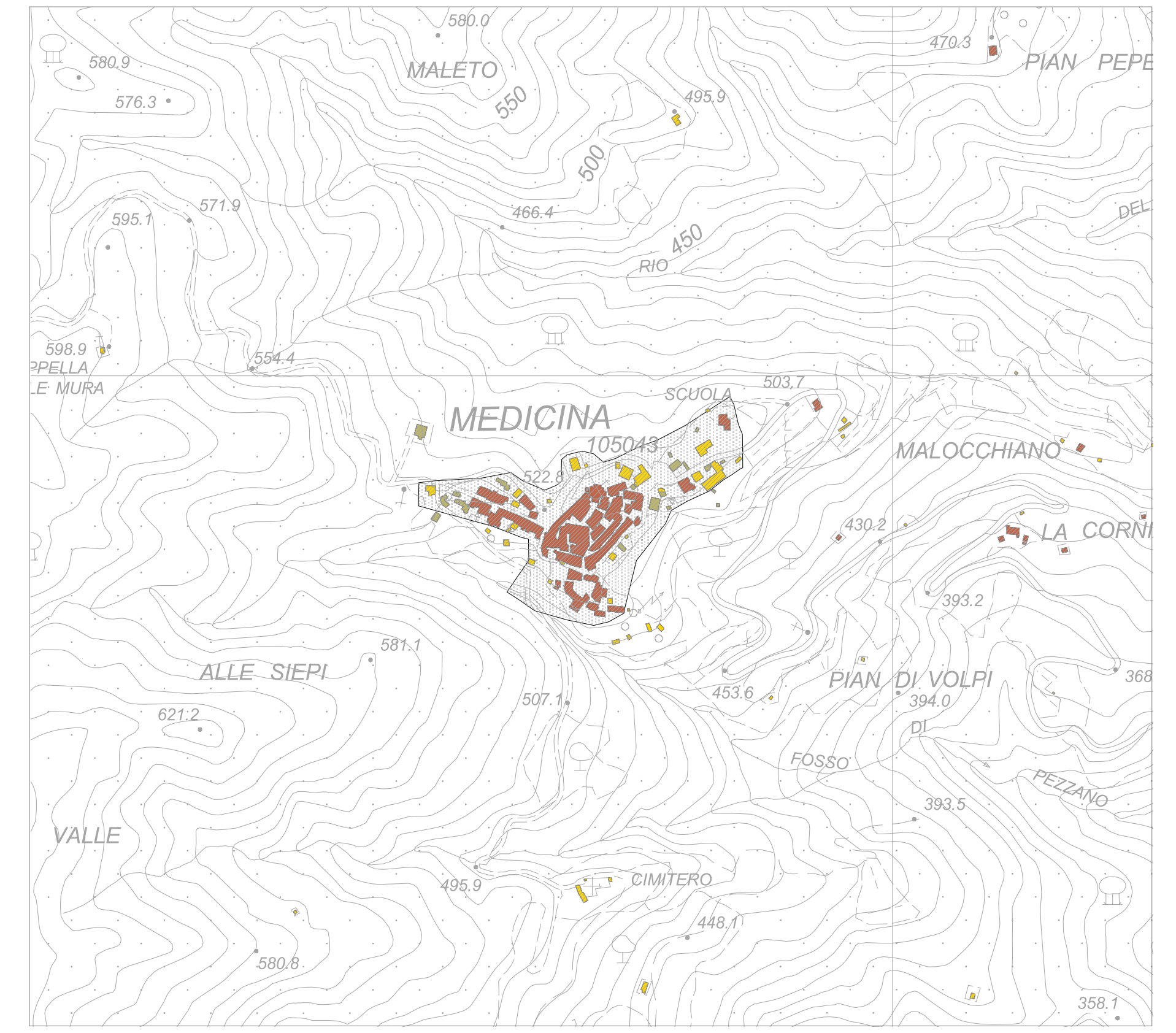
PIETRABUONA

(scala 1:5000)



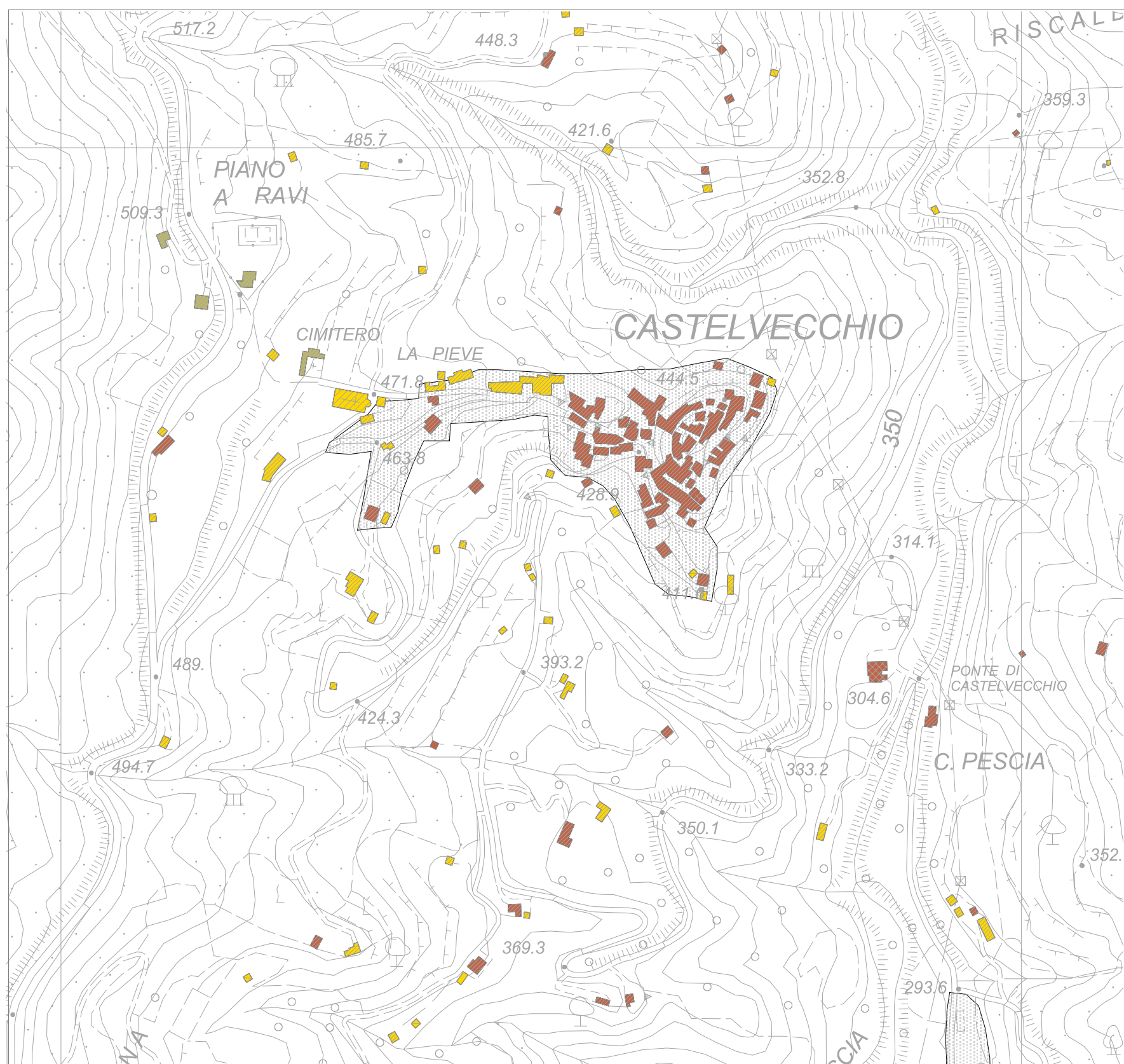
FIBIALLA

(scala 1:5000)



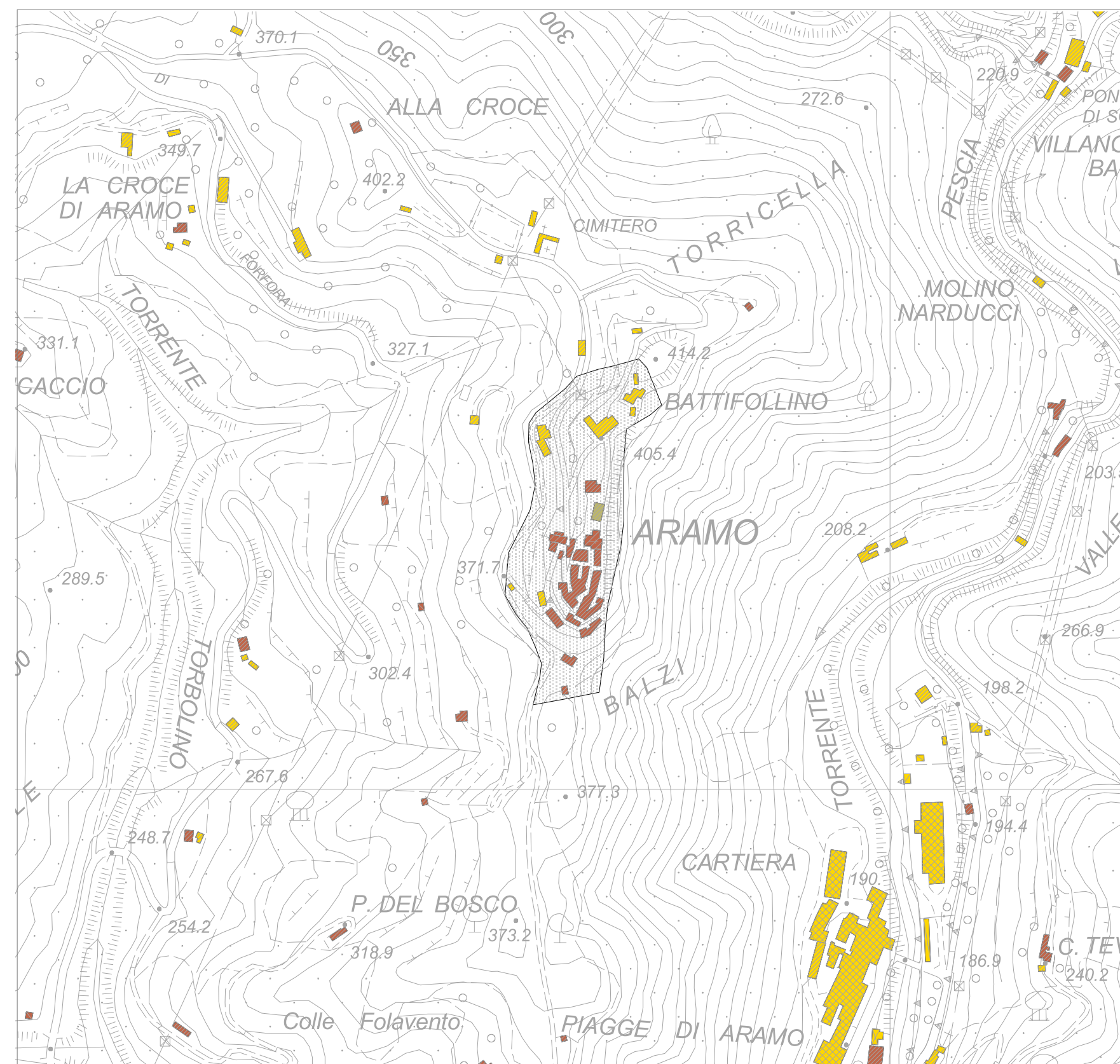
MEDICINA

(scala 1:5000)



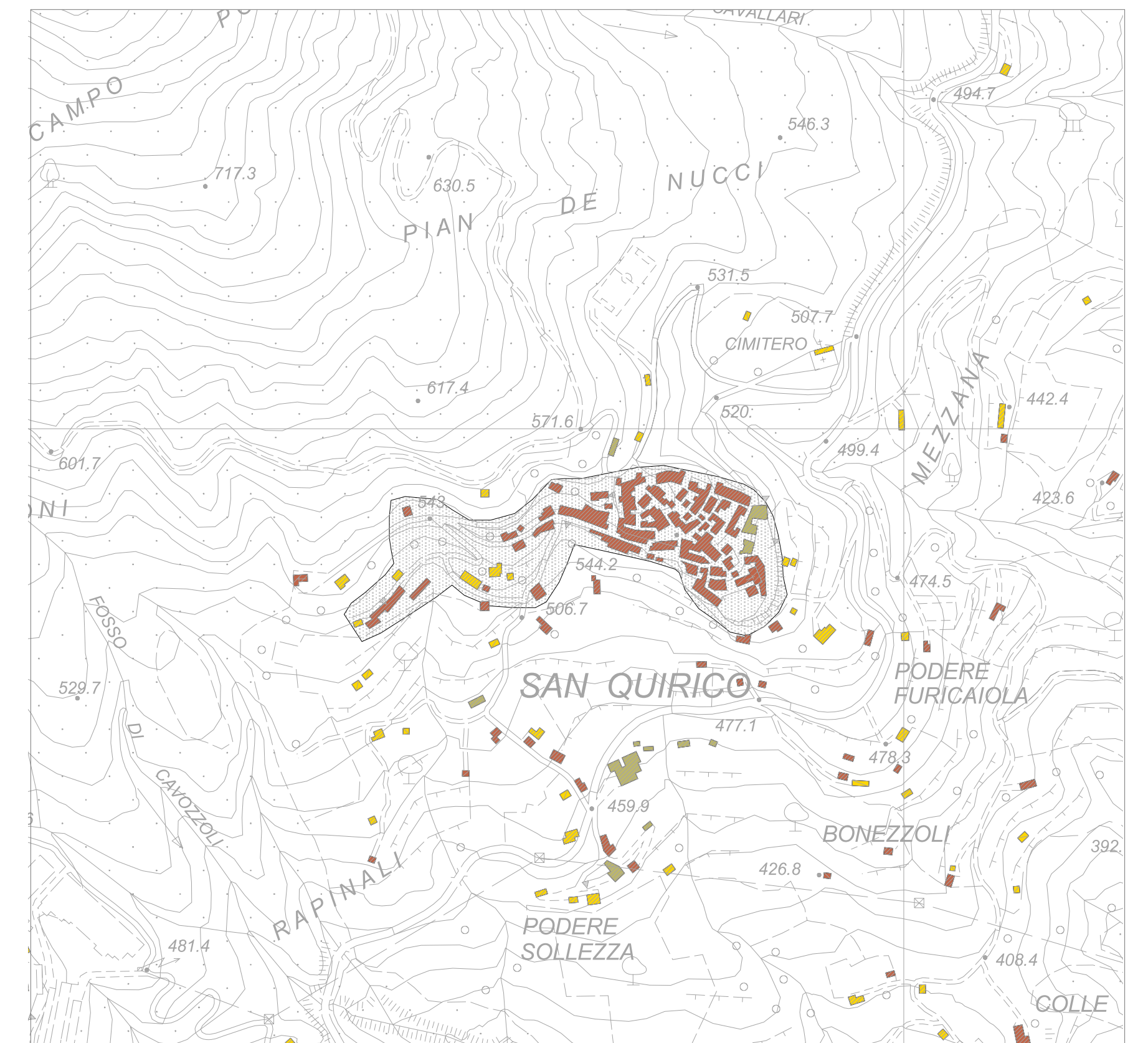
CASTELVECCHIO

(scala 1:3000)



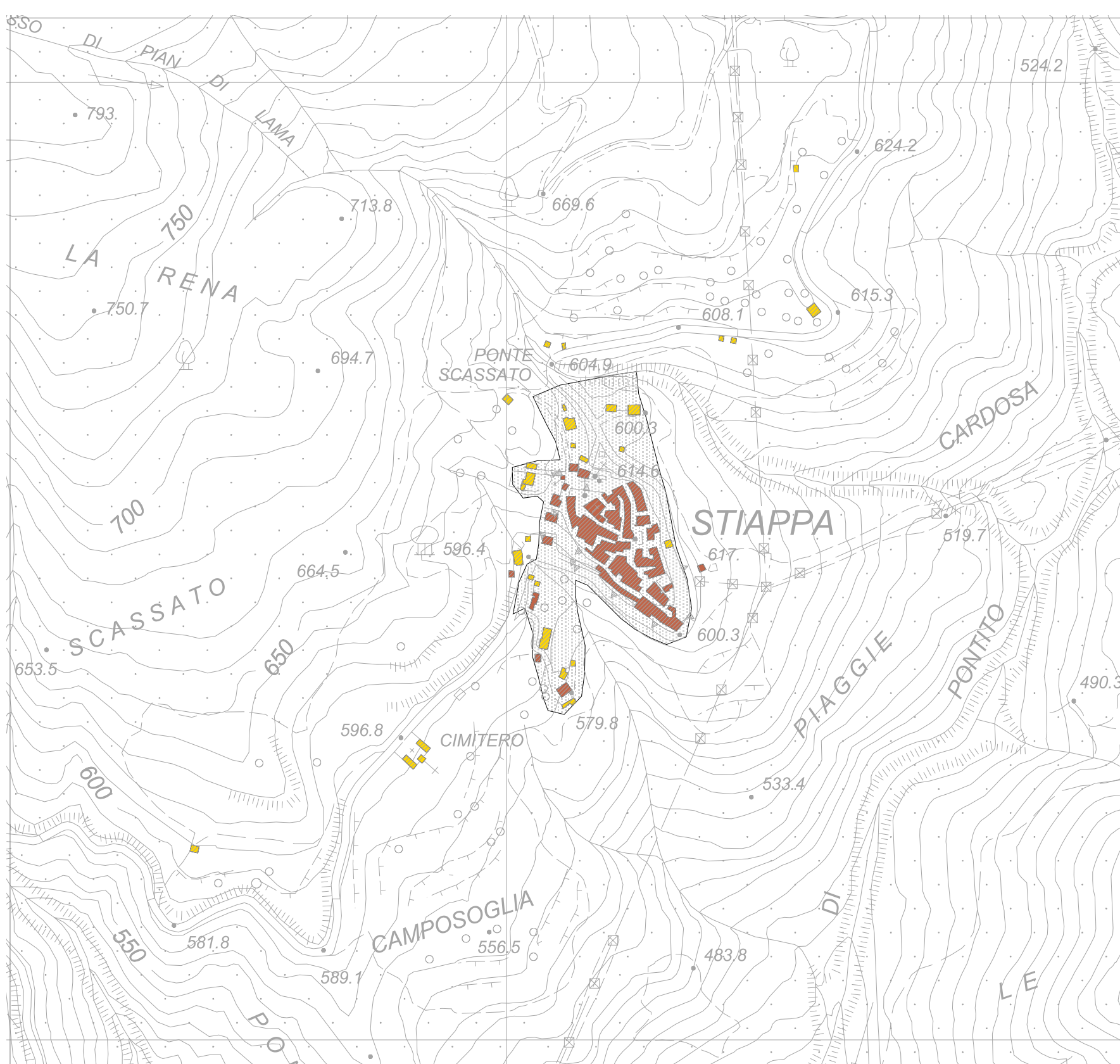
ARAMO

(scala 1:5000)



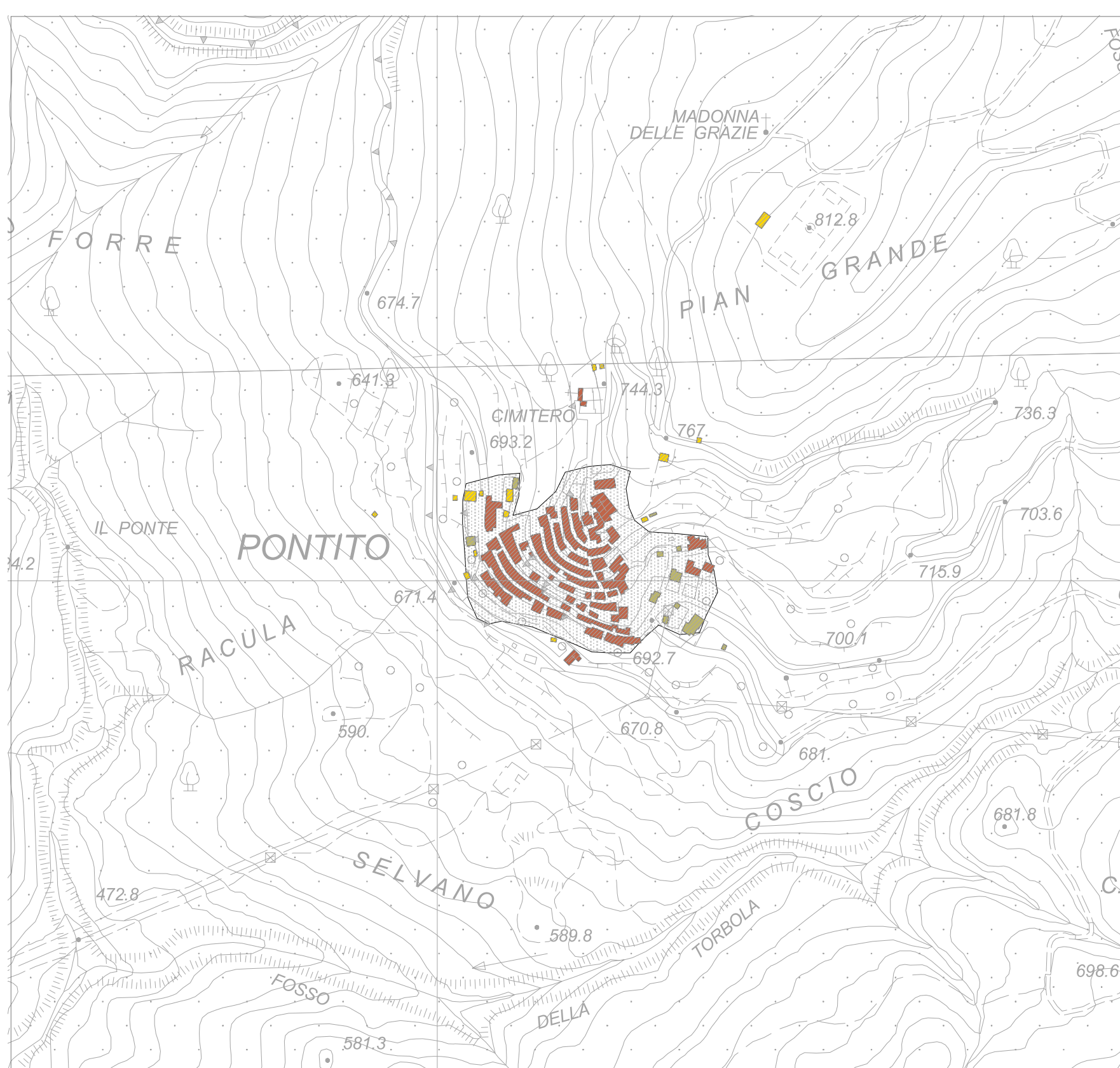
SAN QUIRICO

(scala 1:5000)



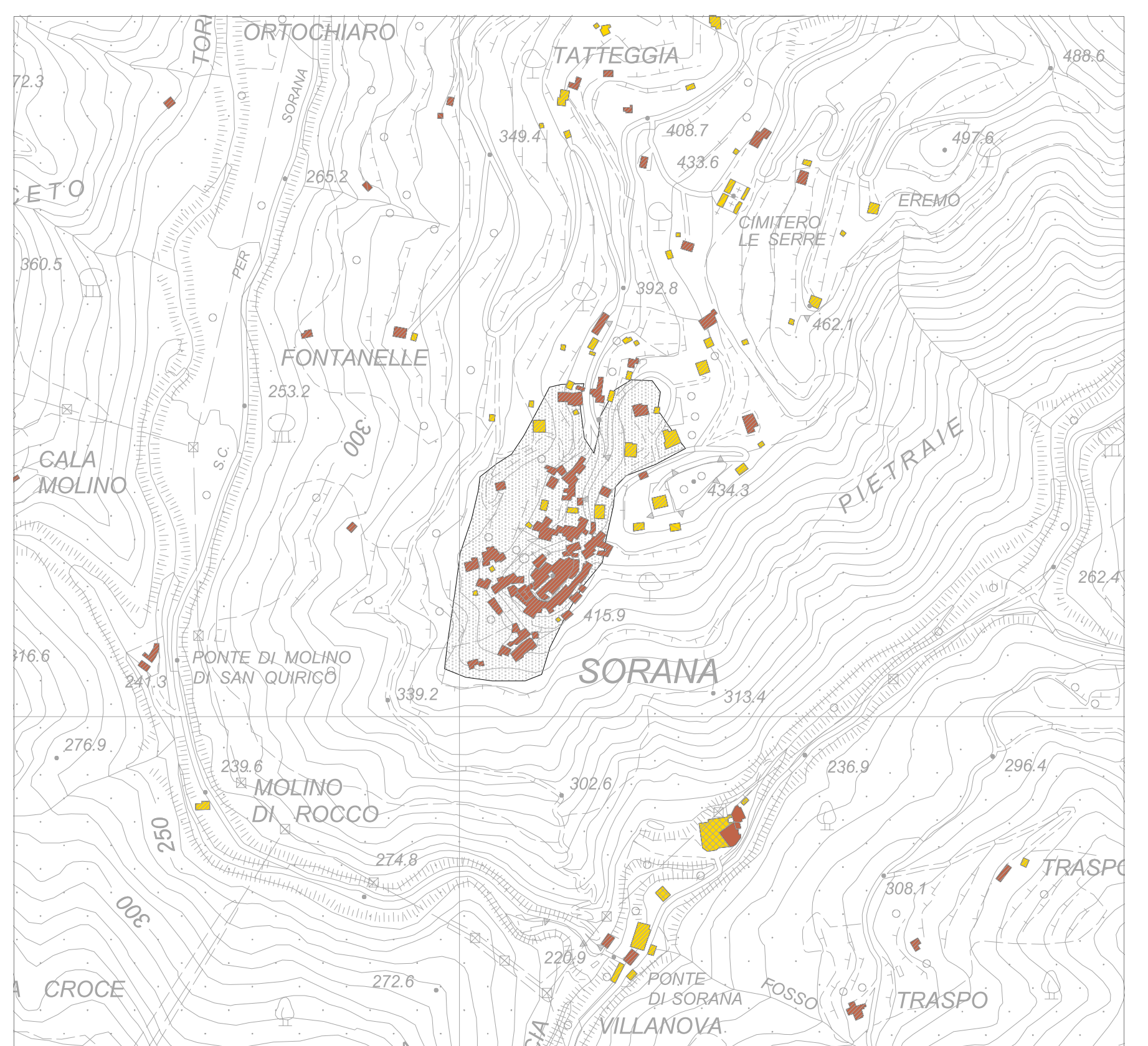
STIAPPA

(scala 1:3000)



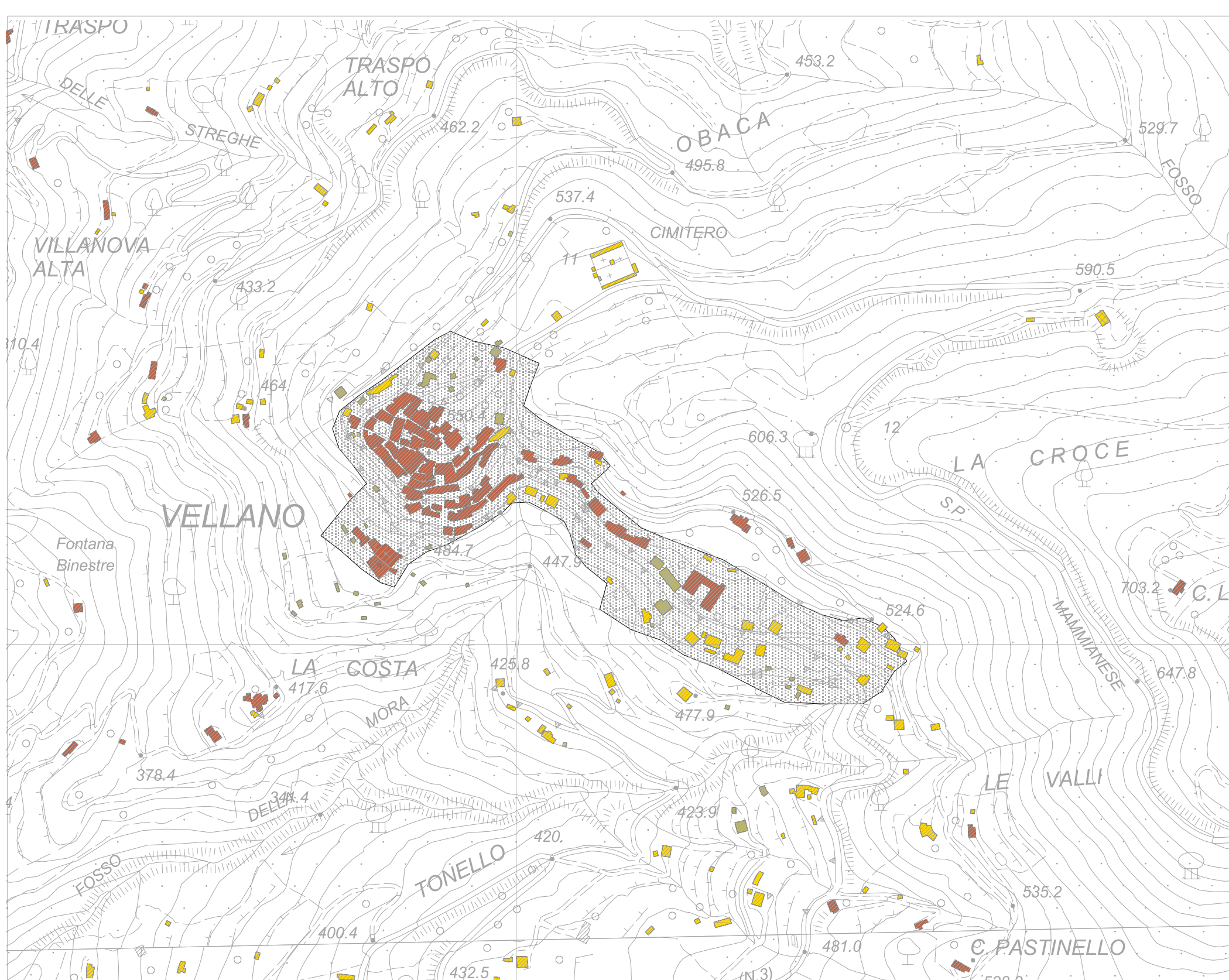
PONTITO

(scala 1:5000)



SORANA

(scala 1:5000)



VELLANO

(scala 1:4000)

LEGENDA

- Edificato alla fine dell'Ottocento
- Edificato al 1950
- Edificato all'attuale



COMUNE DI PESCA
(Ddt. G. M. n. 160/2002, Conv. Integrativa n. 973/2006)

PIANO STRUTTURALE

LEGGE REGIONALE N. 1/2005 e s.m.



PROF. ARCH. FRANCESCO GURRIERI
(Genere: Architetto, Studio di architettura)
PROF. ARCH. BIAGIO GUCCIONE
DOTT. ING. ARCH. PIER LUIGI RUPPI
DOTT. ARCH. SIMONE MENETTI
Responsabile del procedimento
DOTT. ARCH. SIMONE PEDONESE
Elaborazioni Grafiche a cura dell'Ufficio di Piano
arch. Jenny Cori
(p.n. Gian Marco Lazzarini)

LA FORMAZIONE DEI
NUCLEI ABITATIVI

TAV.
QC 02

Scala 1:5.000

Dicembre 2011