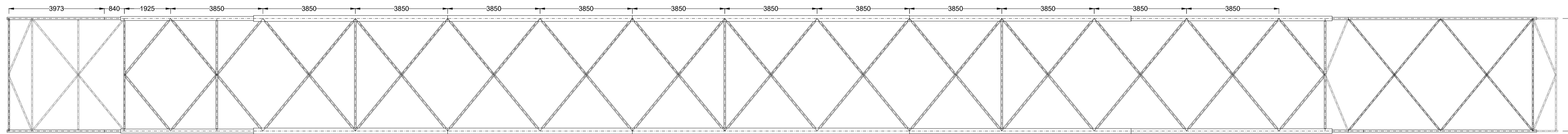
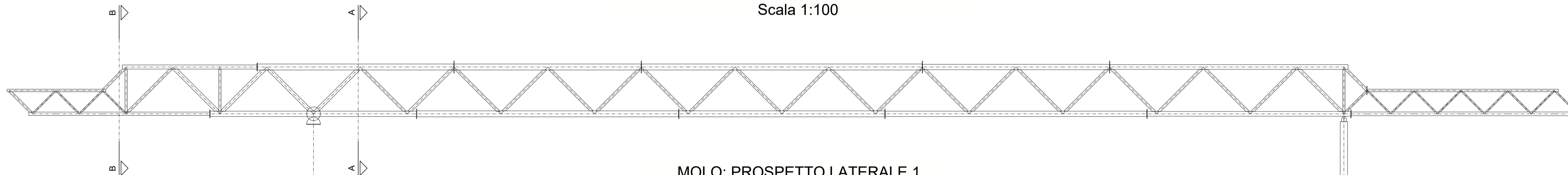


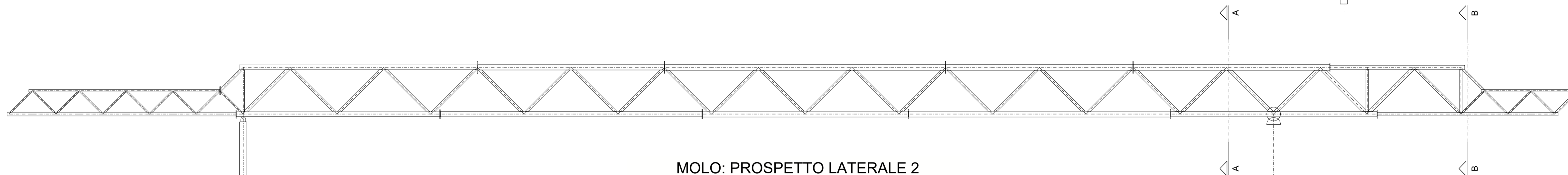
MOLO: Pianta Telaio Inferiore
Scala 1:100



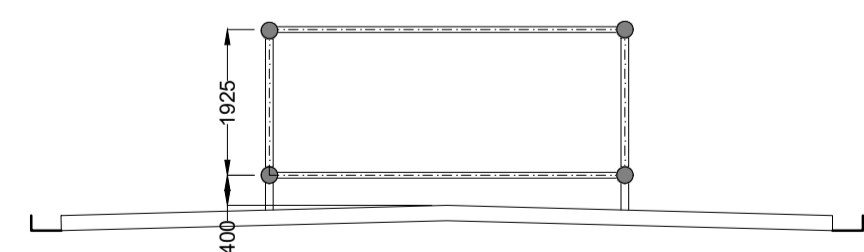
MOLO: Pianta Telaio Superiore
Scala 1:100



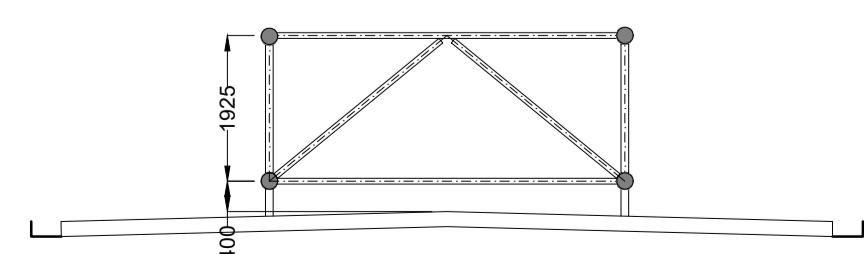
MOLO: Prospetto Laterale 1
Scala 1:100



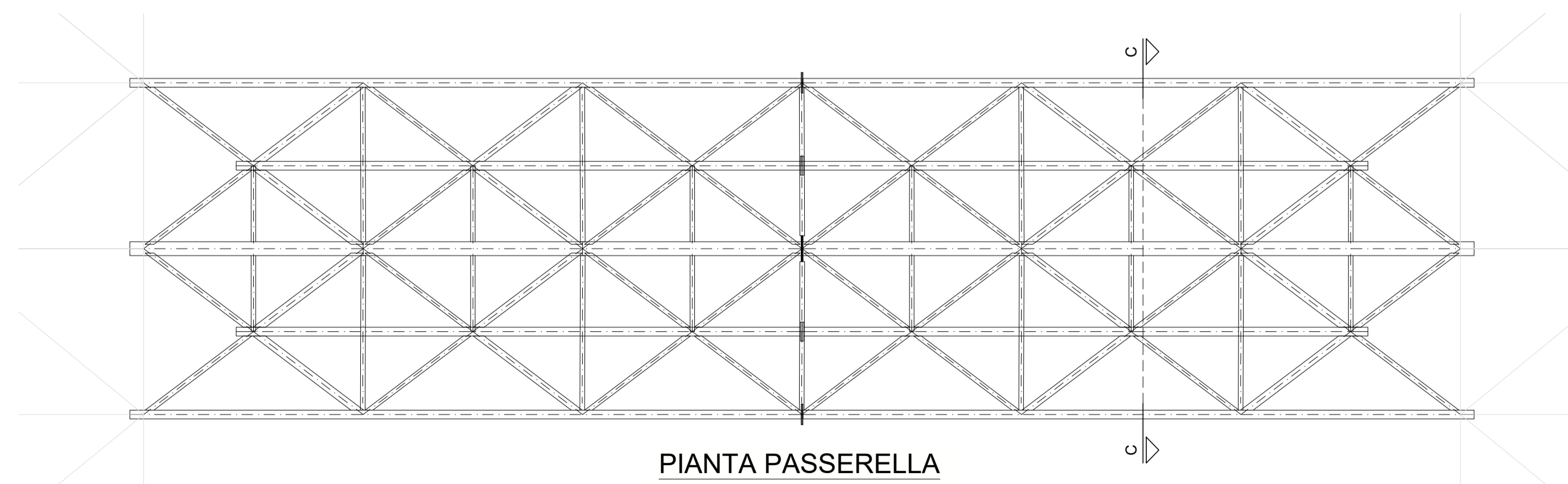
MOLO: Prospetto Laterale 2
Scala 1:100



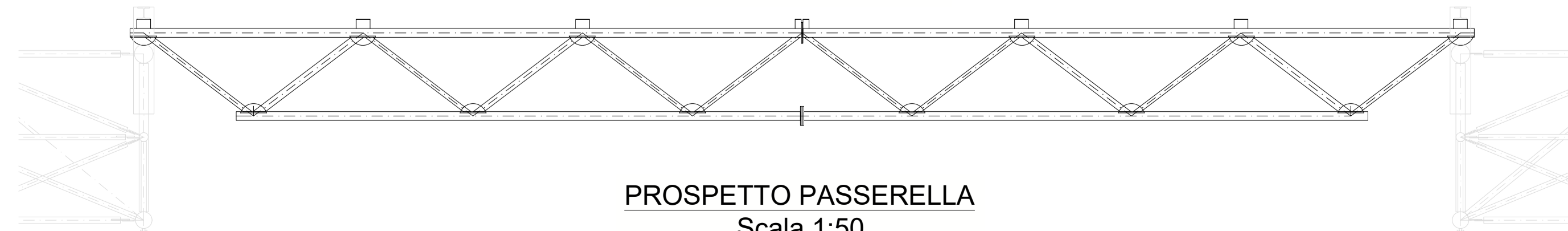
SEZIONE A-A
Scala 1:100



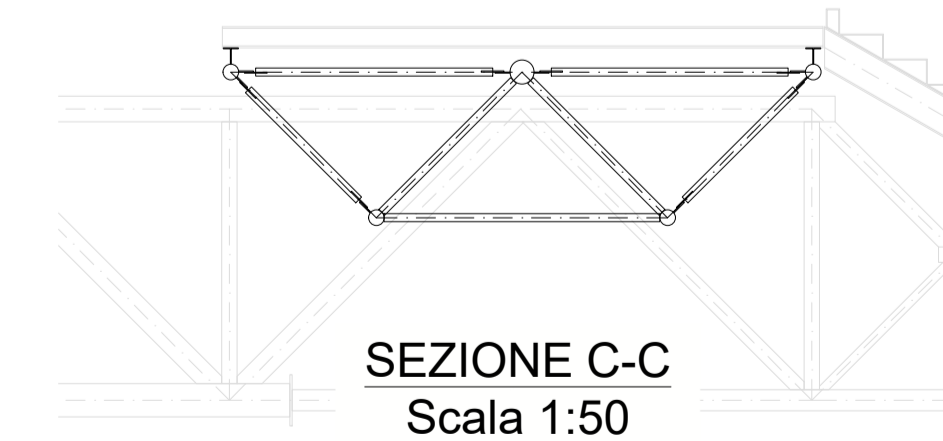
SEZIONE B-B
Scala 1:100



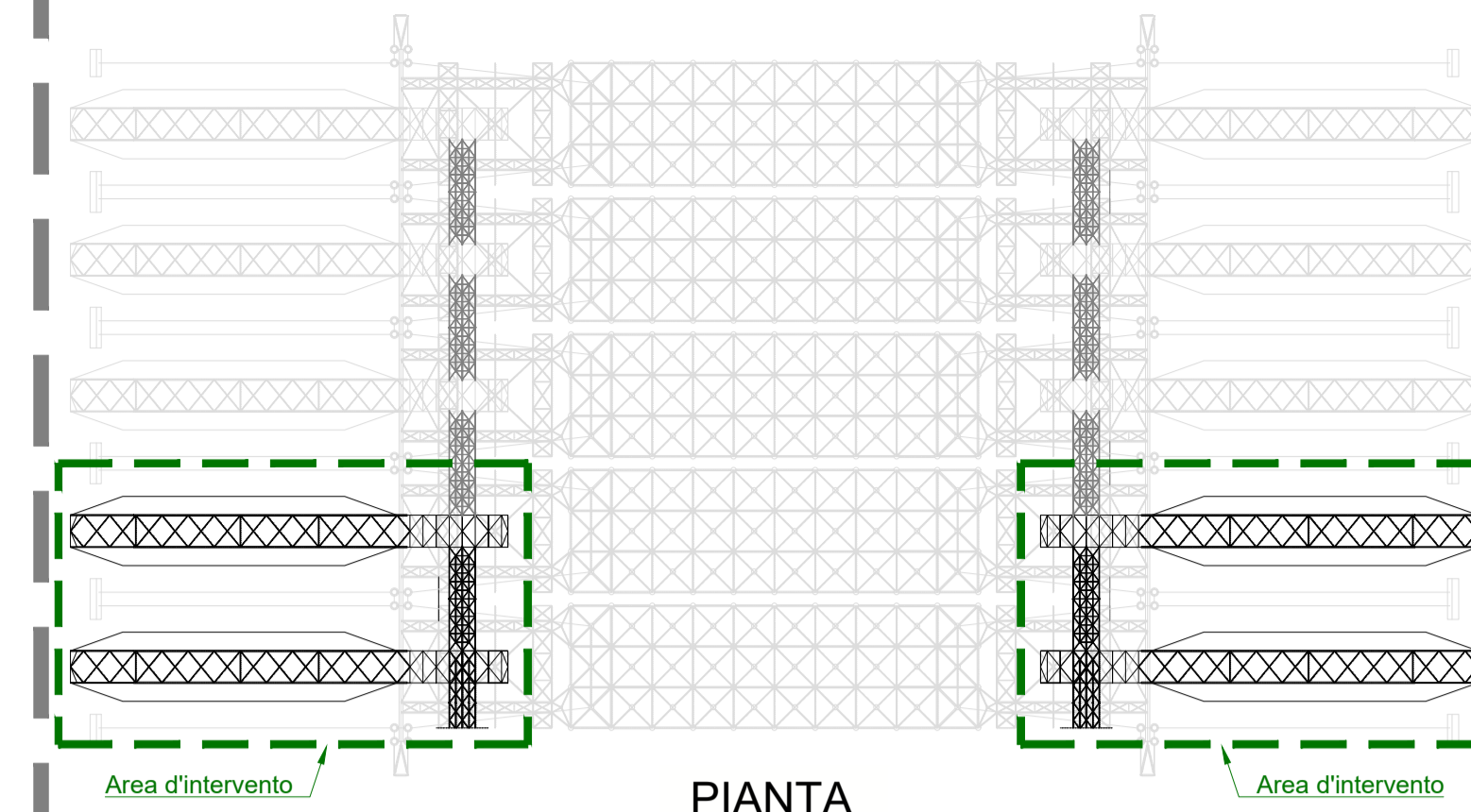
PIANTA PASSERELLA
Scala 1:50



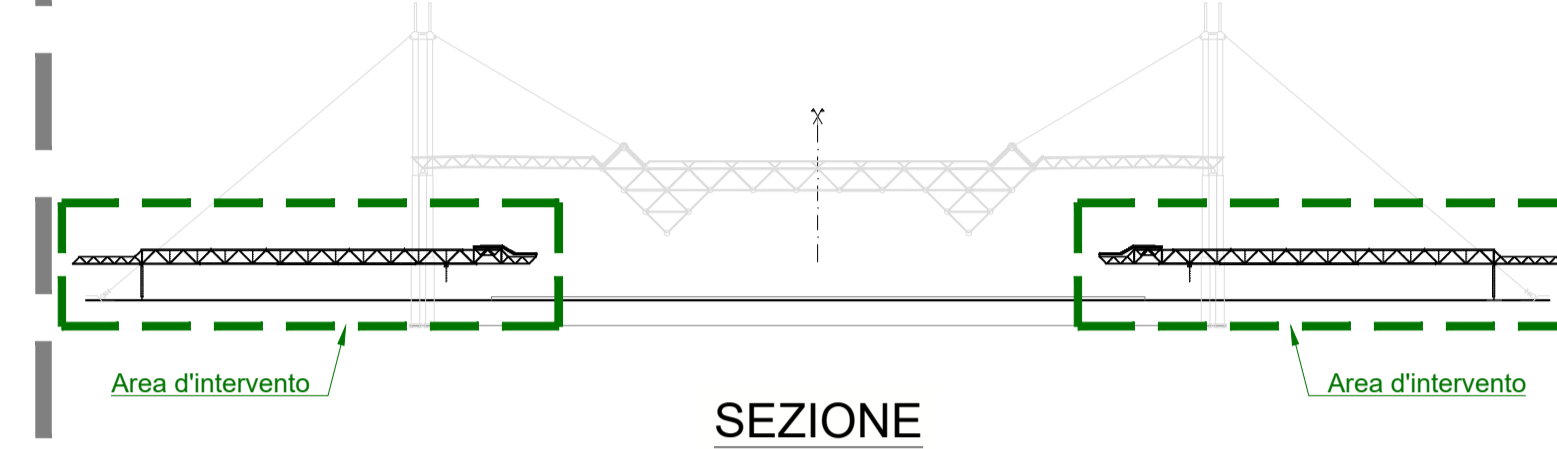
PROSPETTO PASSERELLA
Scala 1:50



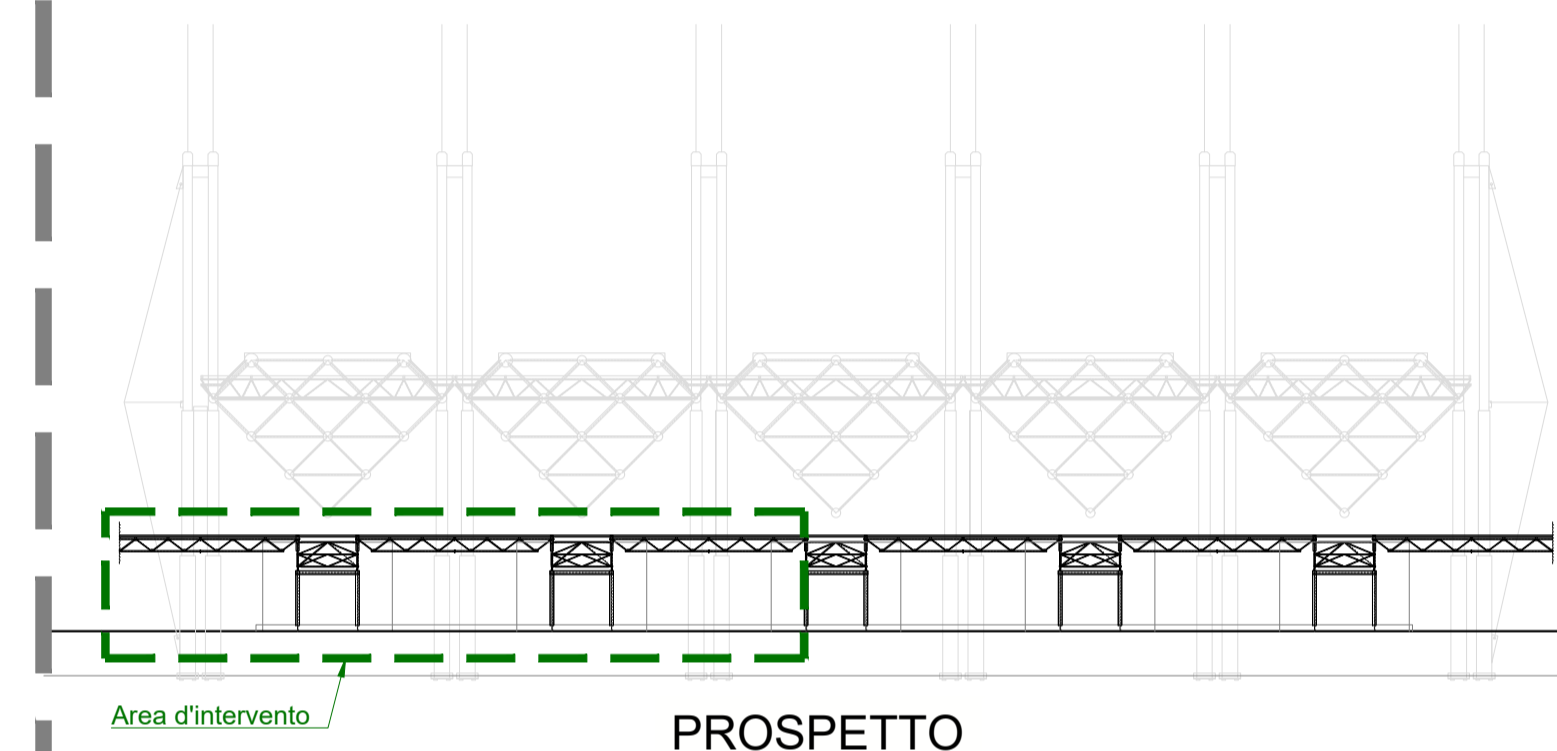
SEZIONE C-C
Scala 1:50



PIANTA



SEZIONE



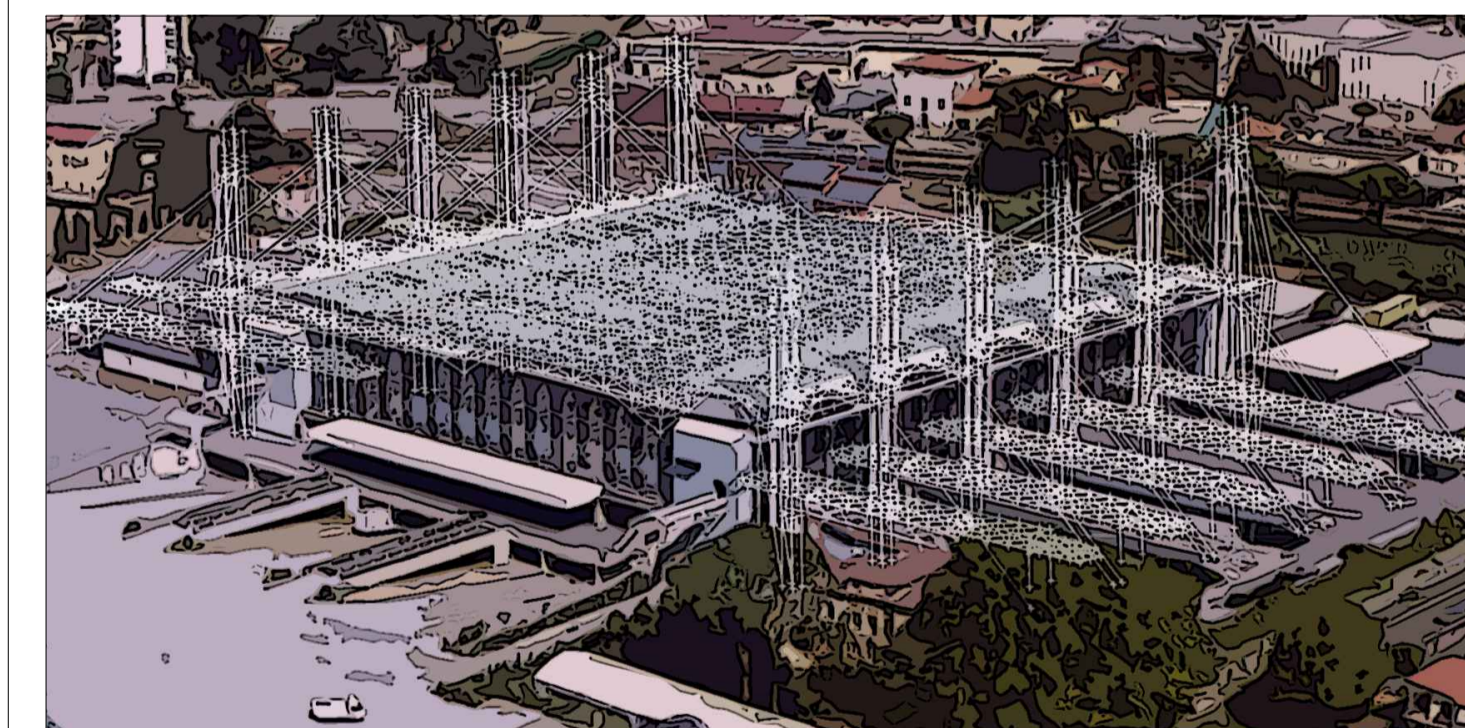
PROSPETTO



Città di Pescia

A.O. OPERE PUBBLICHE E PROTEZIONE CIVILE
Servizio 3 - Gestione del Territorio

INTERVENTO DI MANUTENZIONE STRAORDINARIA PER LA MESSA IN SICUREZZA DELL'IMMOBILE DENOMINATO MERCATO DEI FIORI - 1° STRALCIO FUNZIONALE



PROGETTO ESECUTIVO

TAV.S04 - STRUTTURALE - MOLI E PASSERELLE - STATO ATTUALE

Pescia, li 26 Giugno 2018

R.U.P.
Geom. Luciano BIANCHI

Raggruppamento Temporaneo di Professionisti



Mandatari
Arch. Sergio MARTINELLI
Ing. Alessandro DEL TOZZOTTO
Ing. Giacomo LENCIONI
P.I. Gabriele BONOFILIO
Ing. Francesco BARTOLI