



FOTO _ VETRATA SUD ATTACCO A TERRA



FOTO _ DETTAGLIO MONTANTE E TRAVERSO

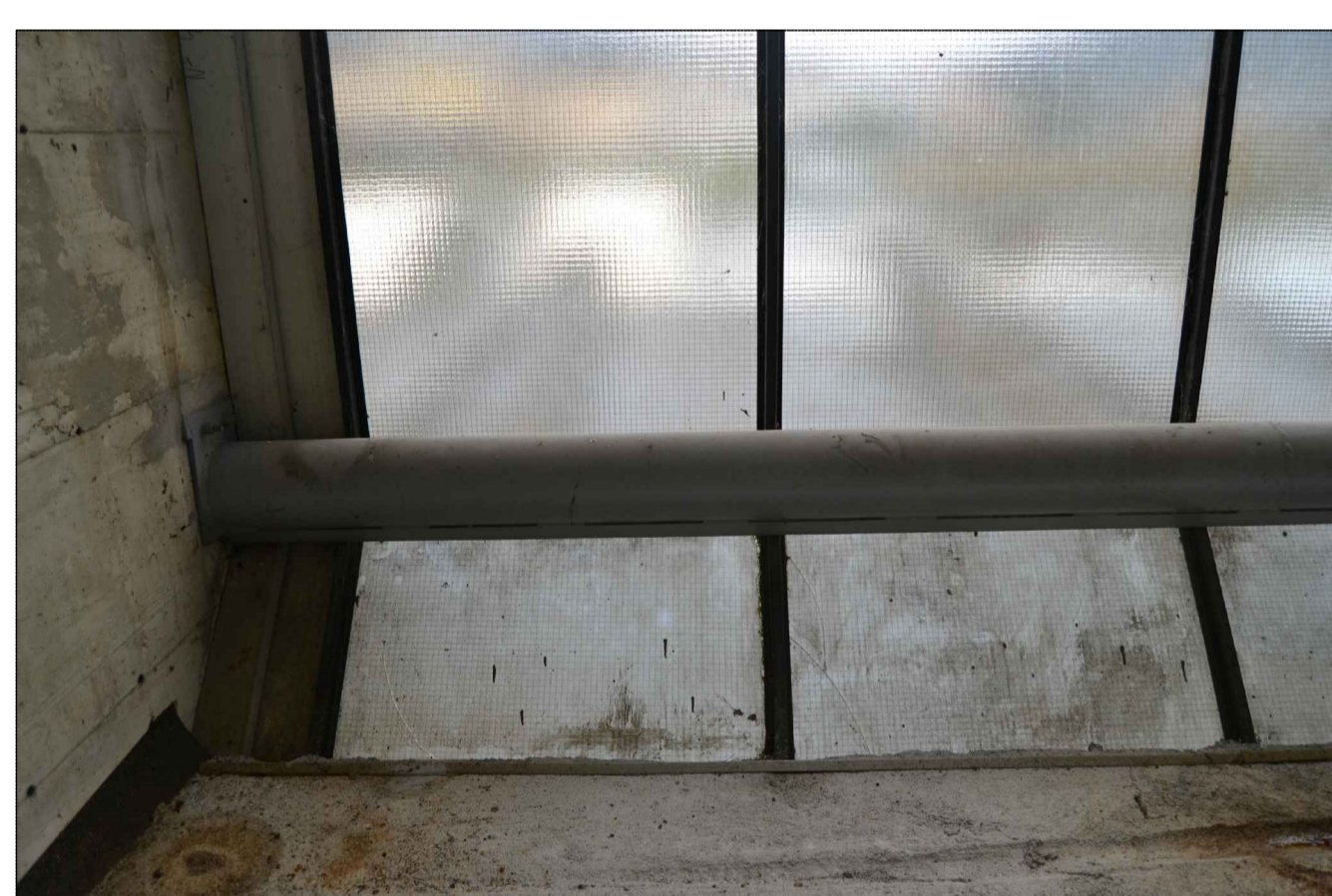


FOTO _ VETRATA SUD DETTAGLIO INTERNO

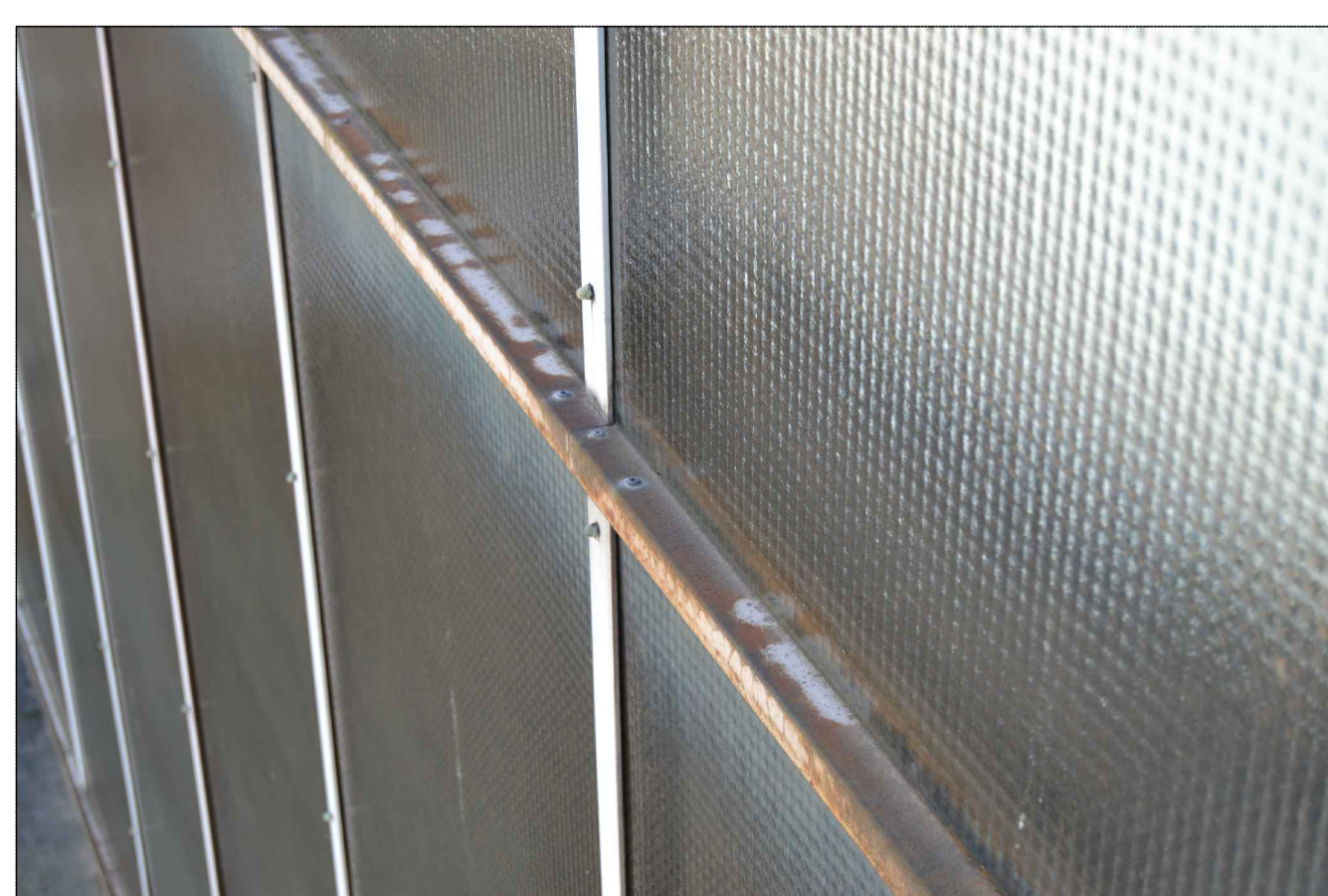
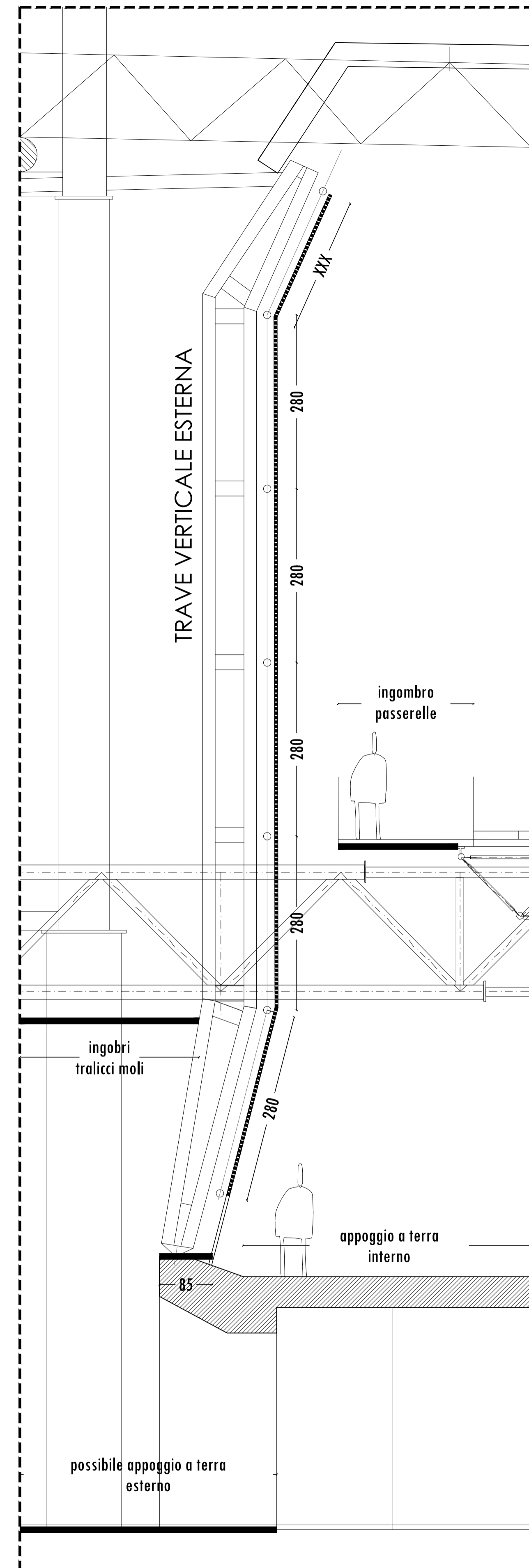
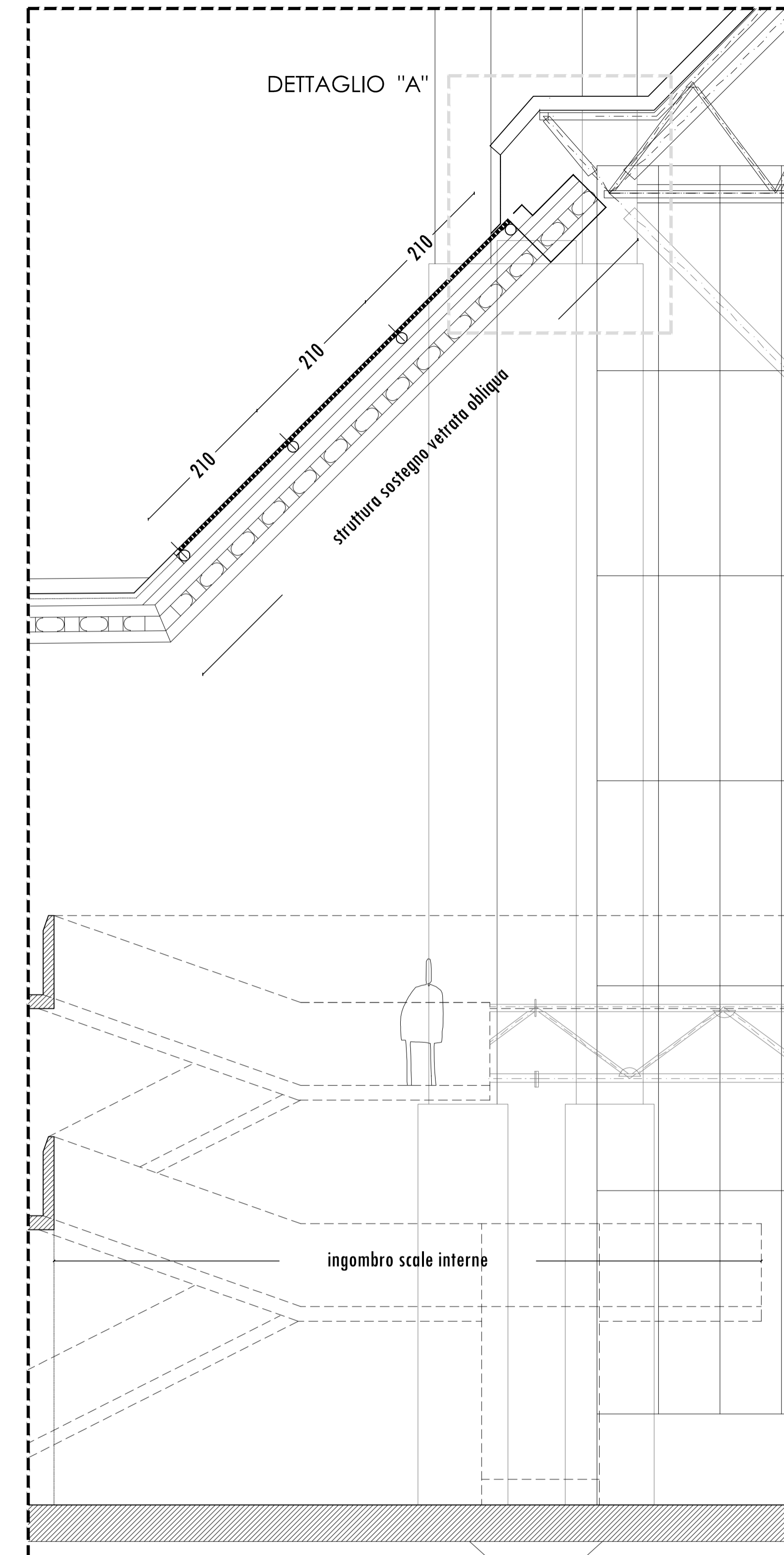


FOTO _ VETRATA DETTAGLIO TRAVERSO



PARTICOLARE_1/2 .(speculare)



PARTICOLARE_3

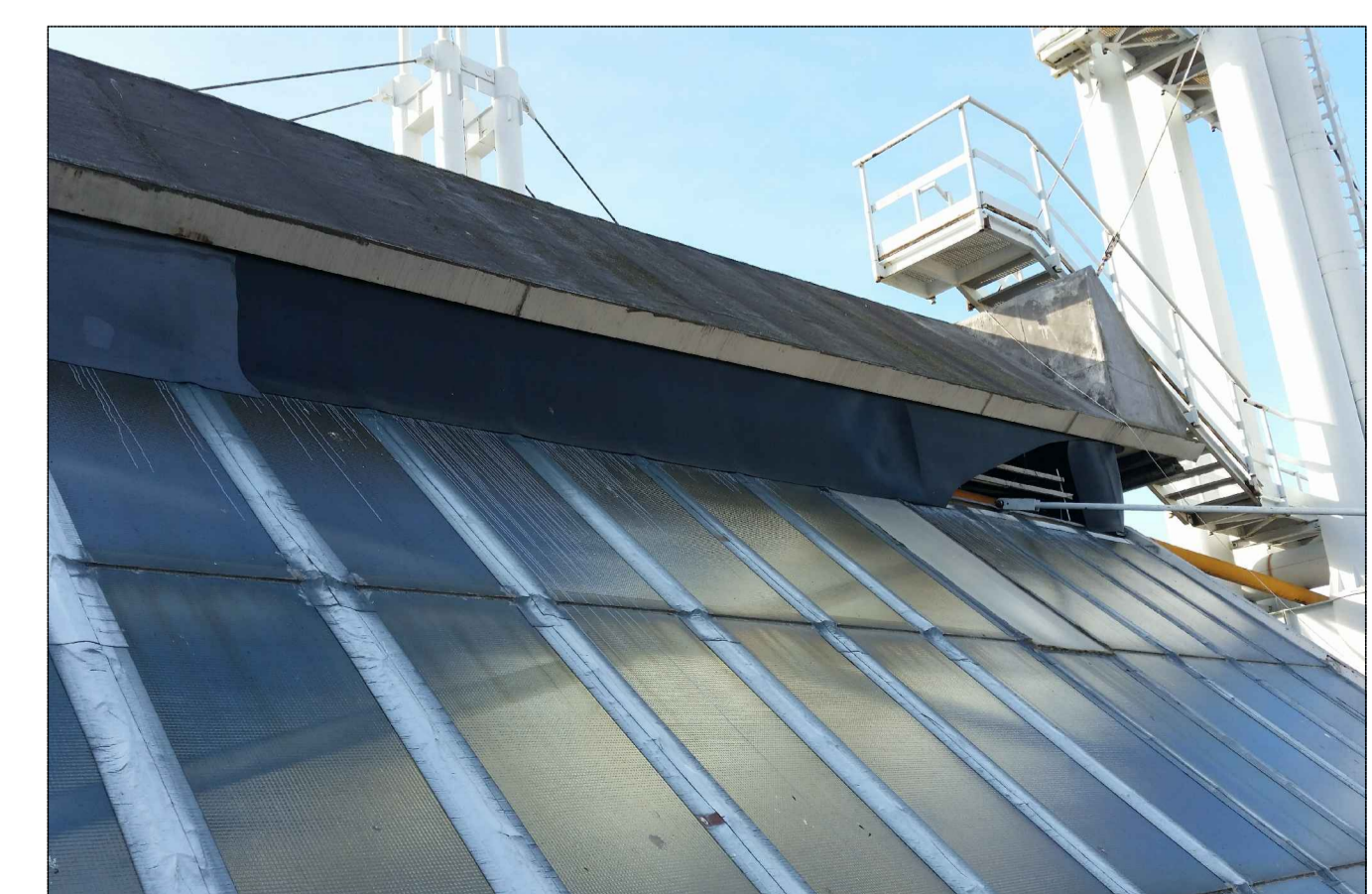
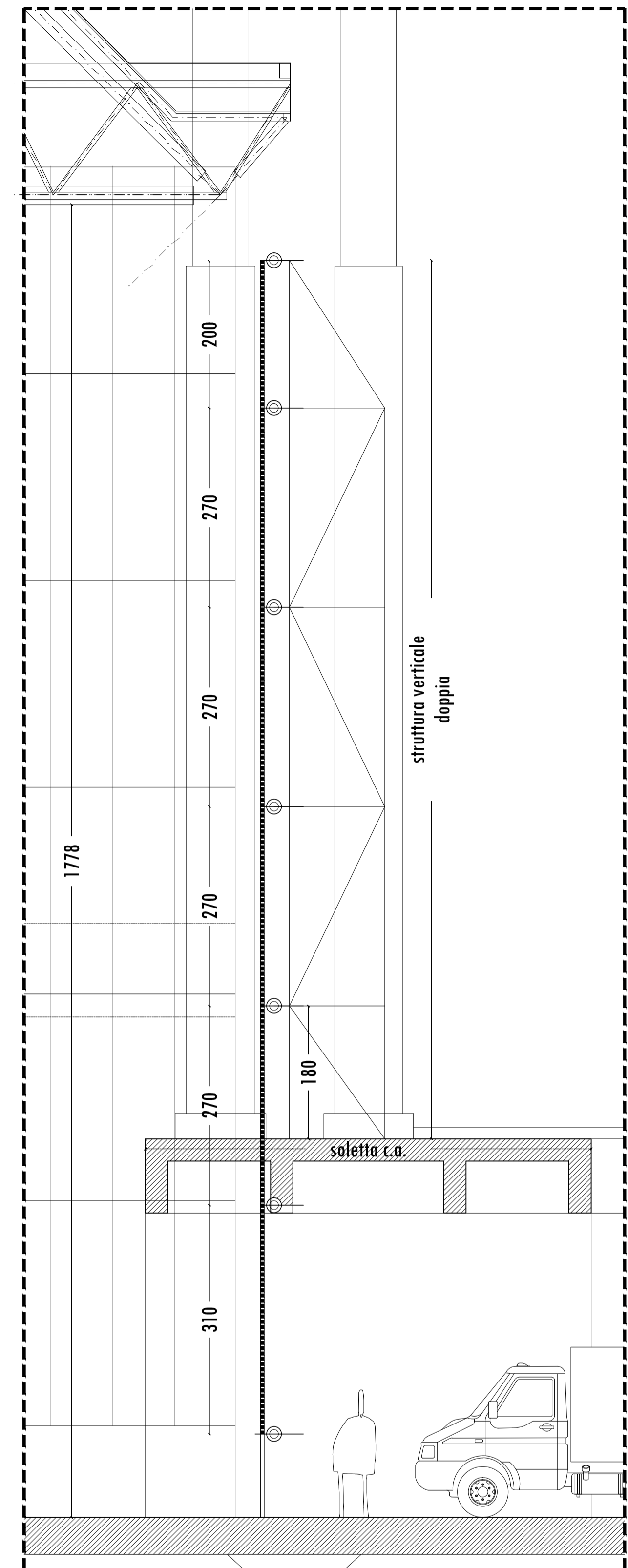


FOTO _ VETRATA OBLIQUA PARTICOLARE ESTERNO



PARTICOLARE_4

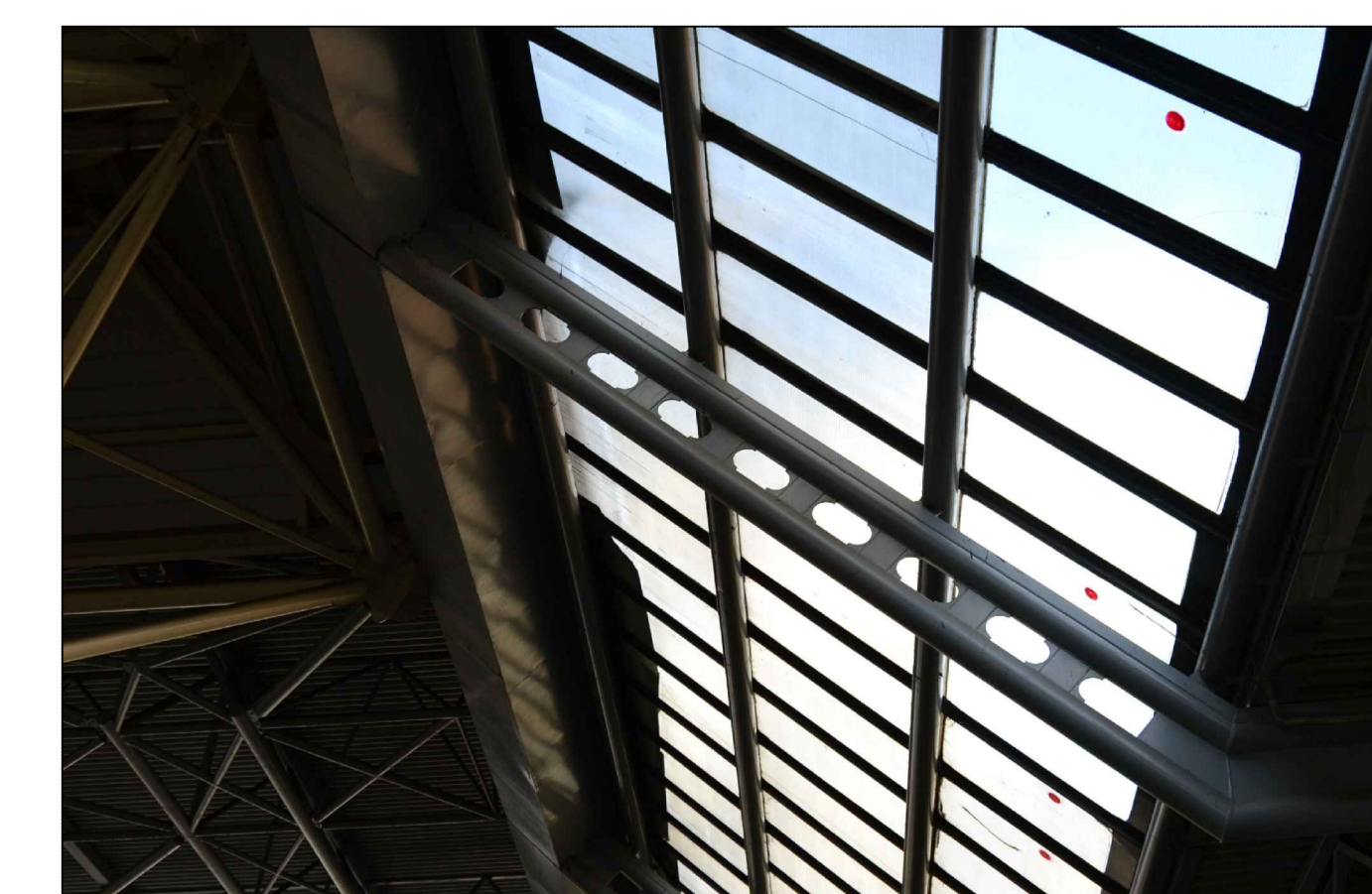
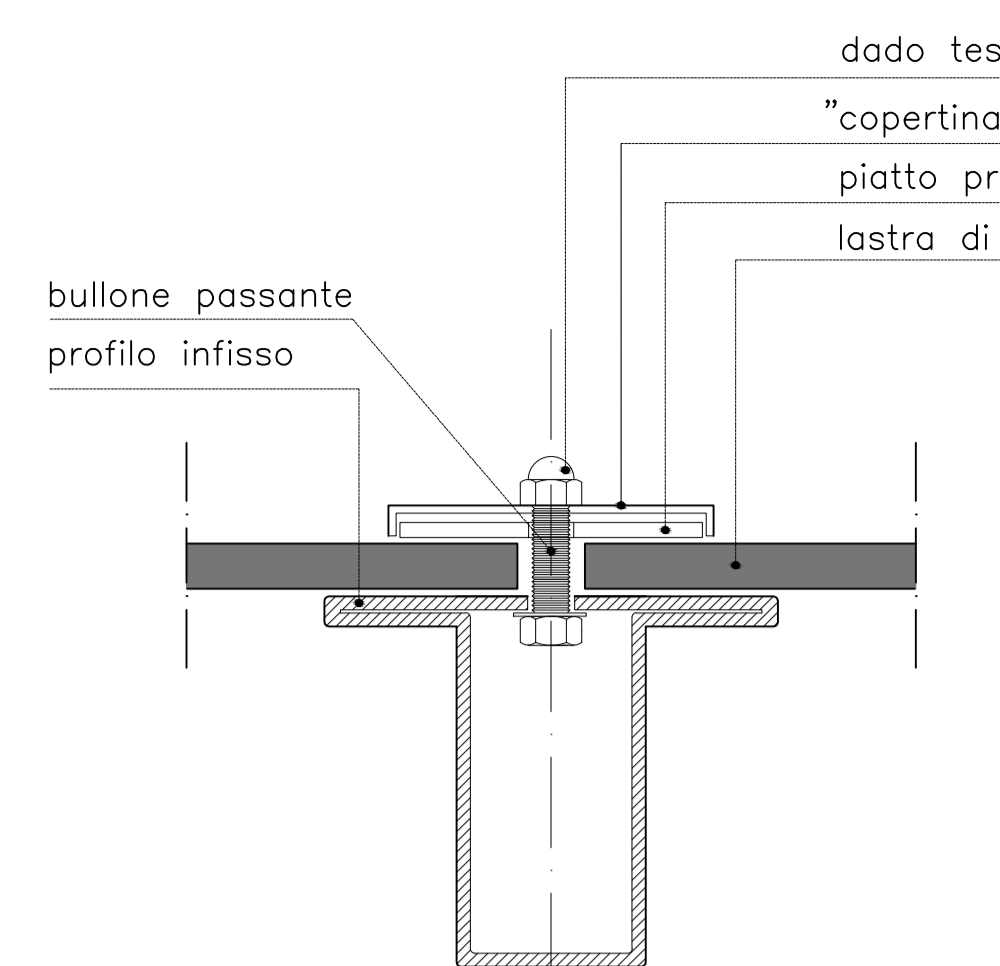
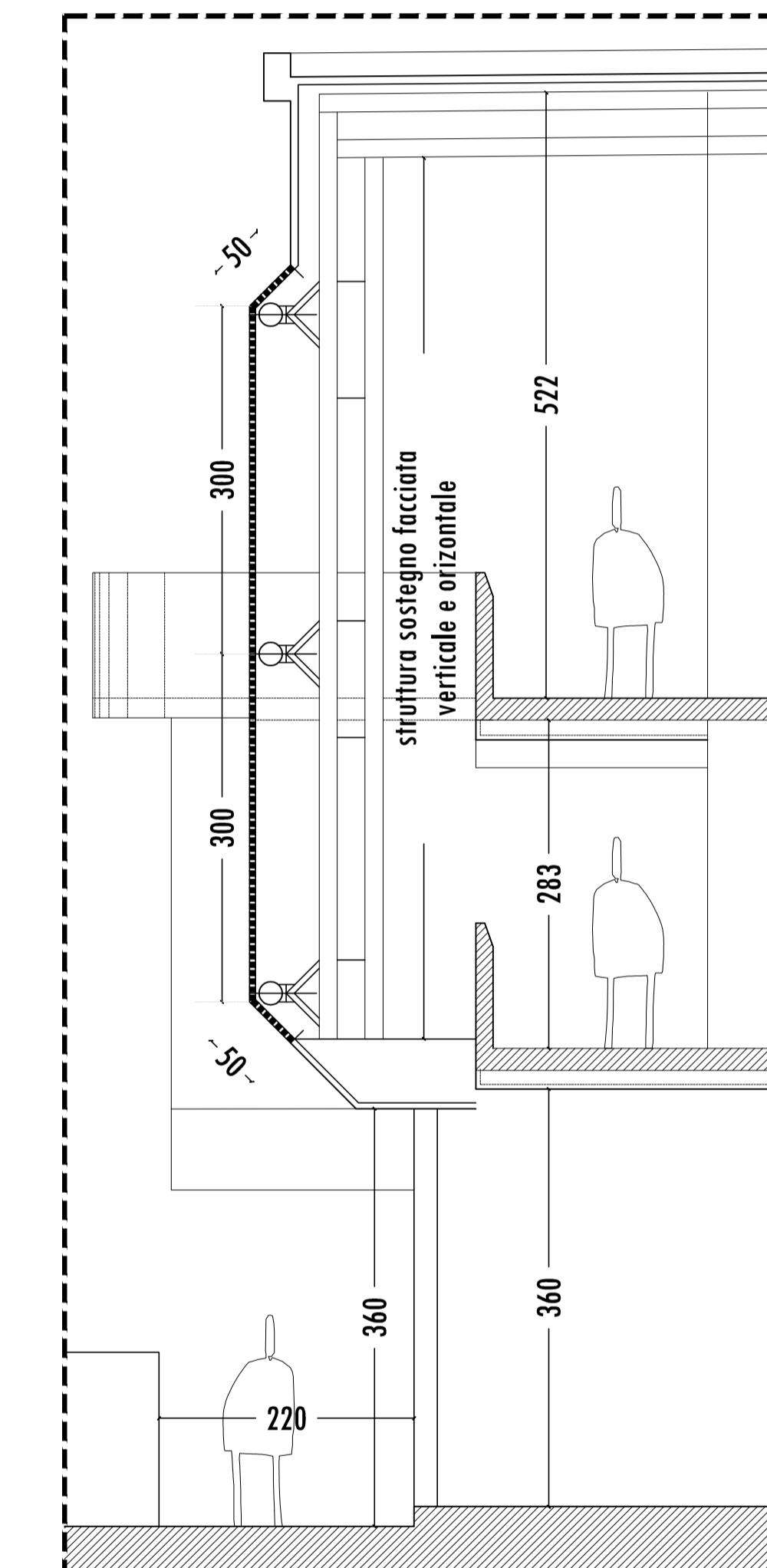


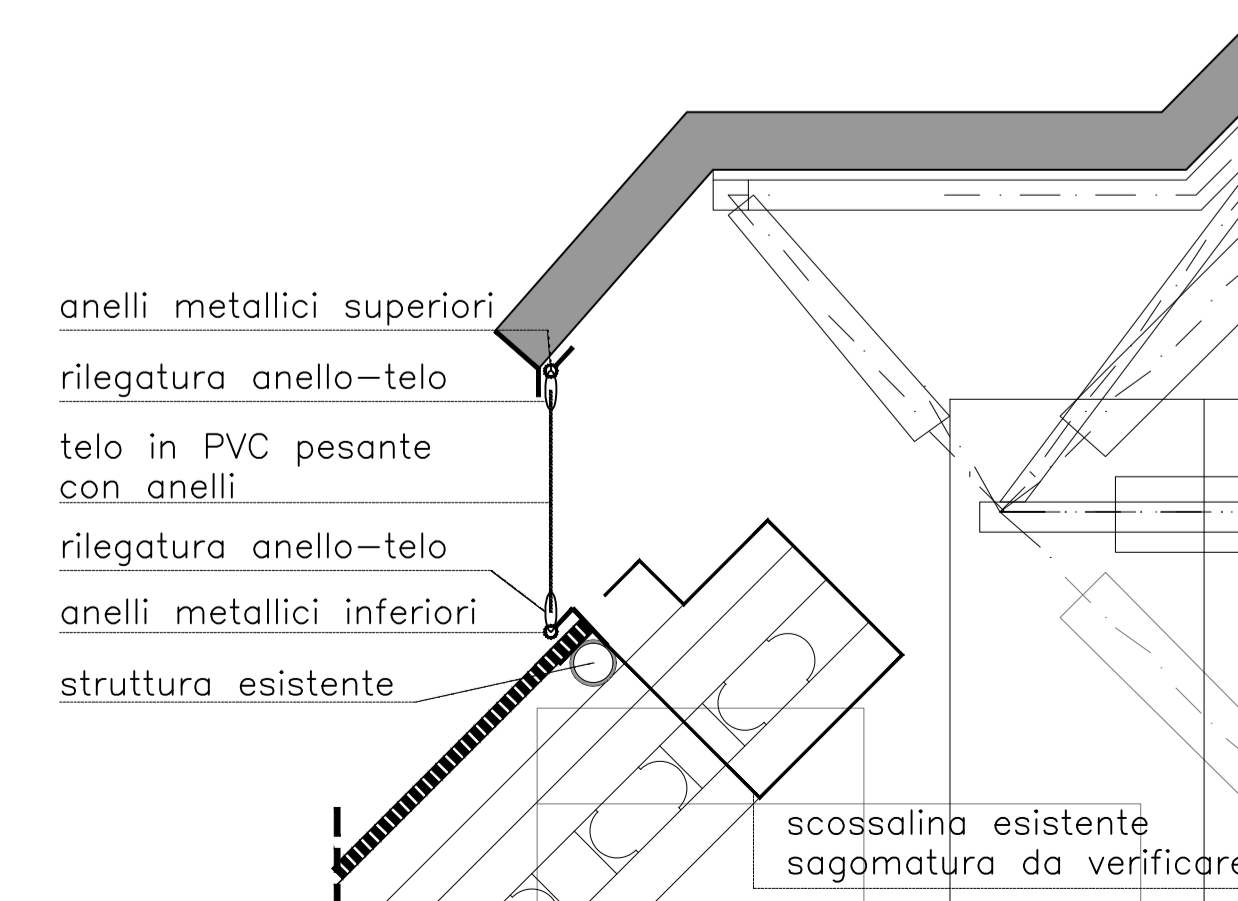
FOTO _ VETRATA OBLIQUA PARTICOLARE INTERNO



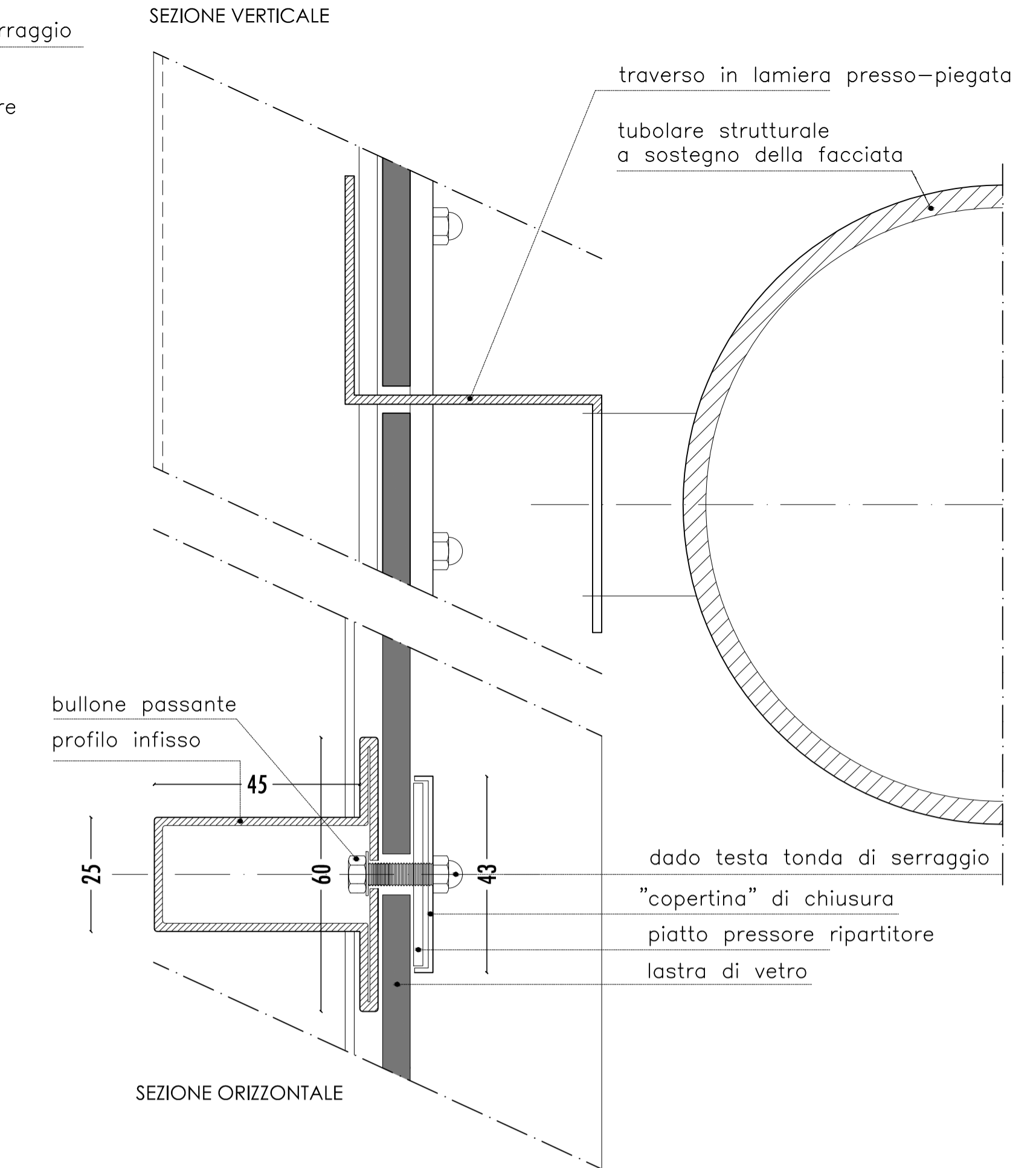
DETTAGLIO PROFILO INFISSO scala 1:1




PARTICOLARE_5



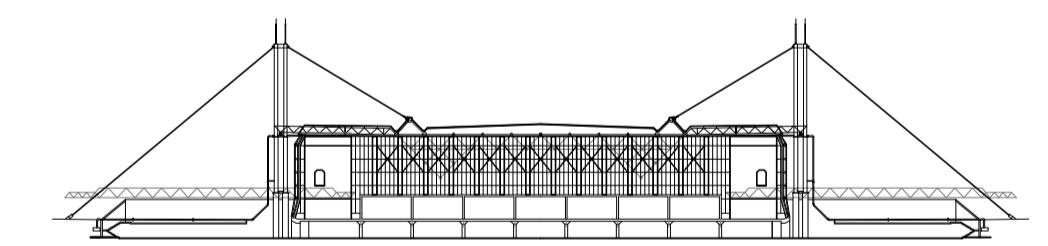
DETTAGLIO "A" (INTERVENTO)



DETTAGLIO INFISSO MONTANTE VERTICALE TRAVERSO ORIZZONTALE SU STRUTTURA scala 1:1


A.O. OPERE PUBBLICHE E PROTEZIONE CIVILE
 Servizio 3 - Gestione del Territorio

Intervento di restauro e risanamento conservativo delle pareti vetrate
 Immobile ex Comiconc - Comune di Pescia



PROGETTO DEFINITIVO - ESECUTIVO
 COORDINAMENTO ALLA SICUREZZA IN FASE DI PROGETTAZIONE

Responsabile Unico del Procedimento
 Geom. Luciano Bianchi
 Raggruppamento Temporaneo di Professionisti
 Mandatario: **LOTTI ARCHITETTI ASSOCIATI** (Arch. Andrea Lotti, Via Galvani 17 - Pistoia)
 Mandanti: Arch. Sergio Martinelli (Via Amendola 87 - Pescia) and Geom. Massimo Melani (Via Galvani 17 - Pistoia)

STATO ATTUALE
 PARTICOLARI E DETTAGLI

30 Maggio 2018 Scala 1.50 - 1.25 - 1.1