

COMUNE DI PESCIA
Microzonazione Sismica di Livello 2
Profili ESAC-Masw
Profilo ST29
Ubicazione: Veneri
Data: 24 aprile 2017

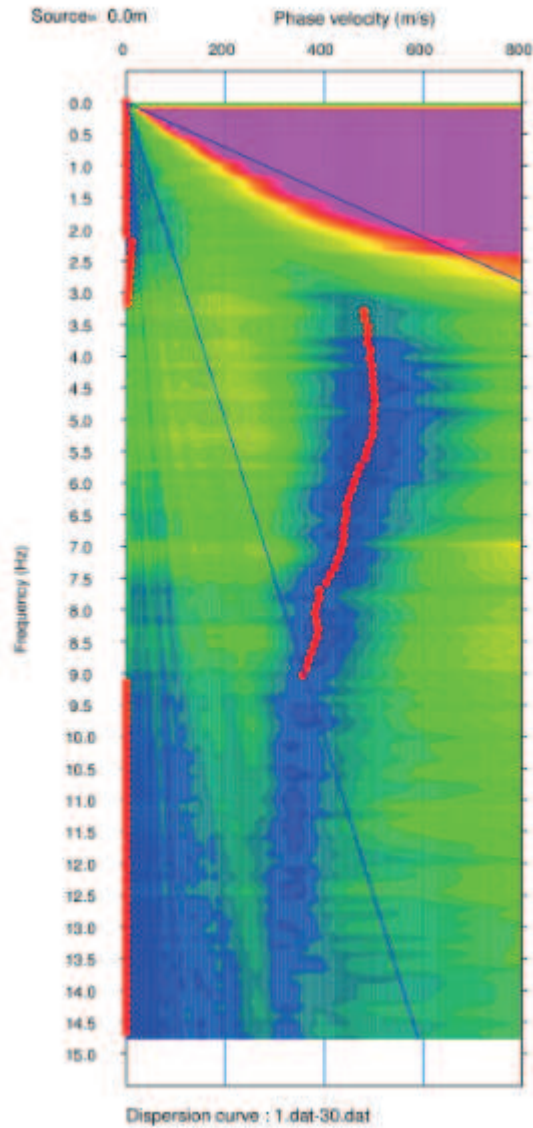
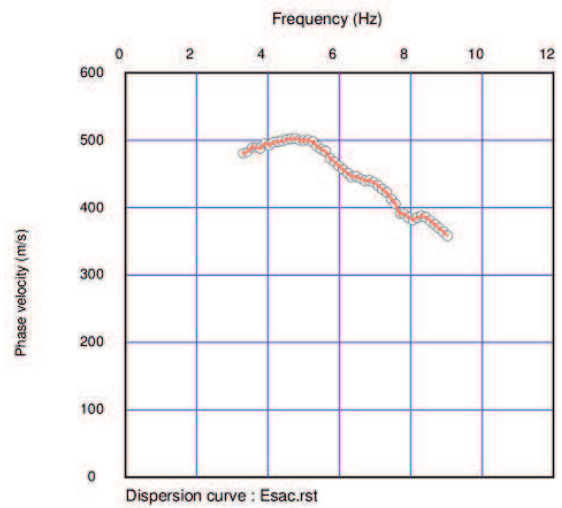


Grafico Velocità di fase-Frequenza (Esac)



Curva di dispersione (Esac)

Profilo ESAC-Masw ST29 – Veneri

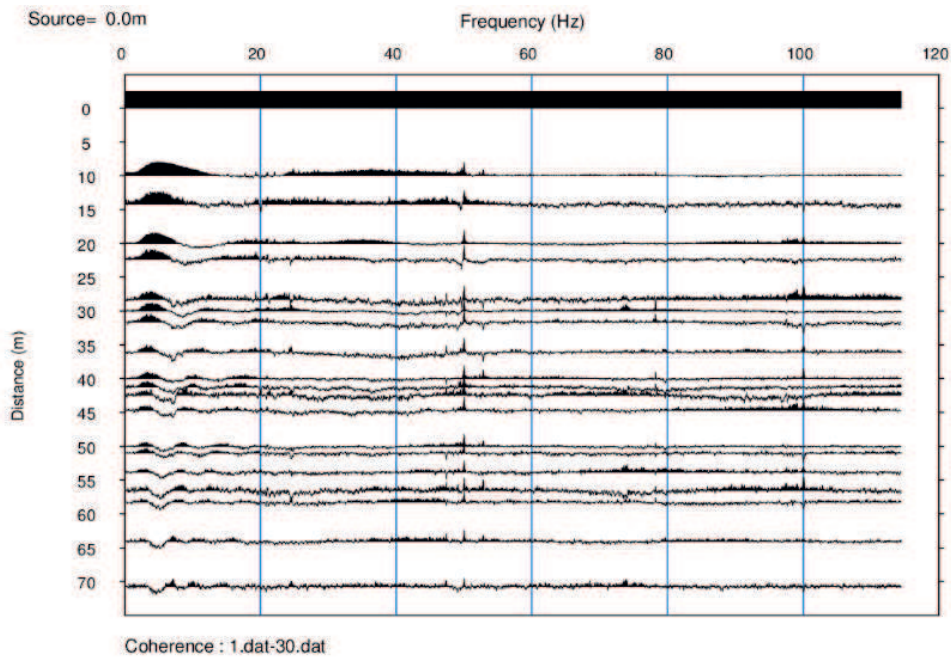


Grafico di autocorrelazione Esac

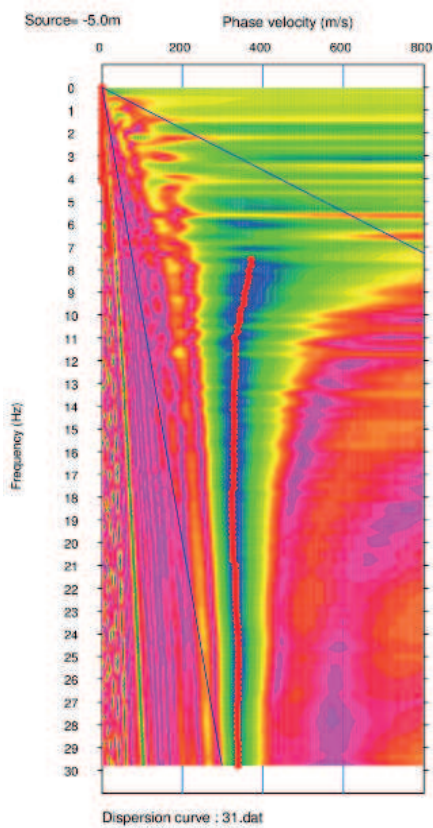
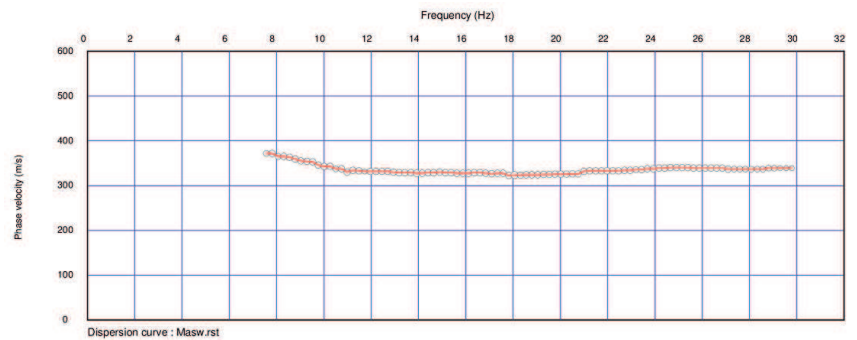
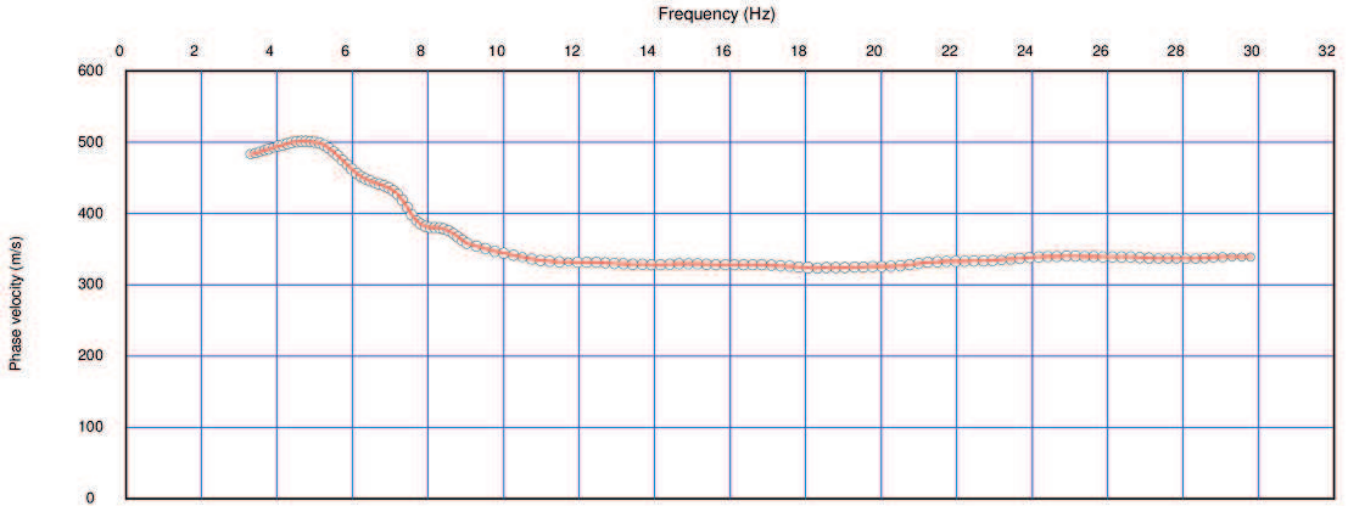


Grafico Velocità di fase-Frequenza (Masw)

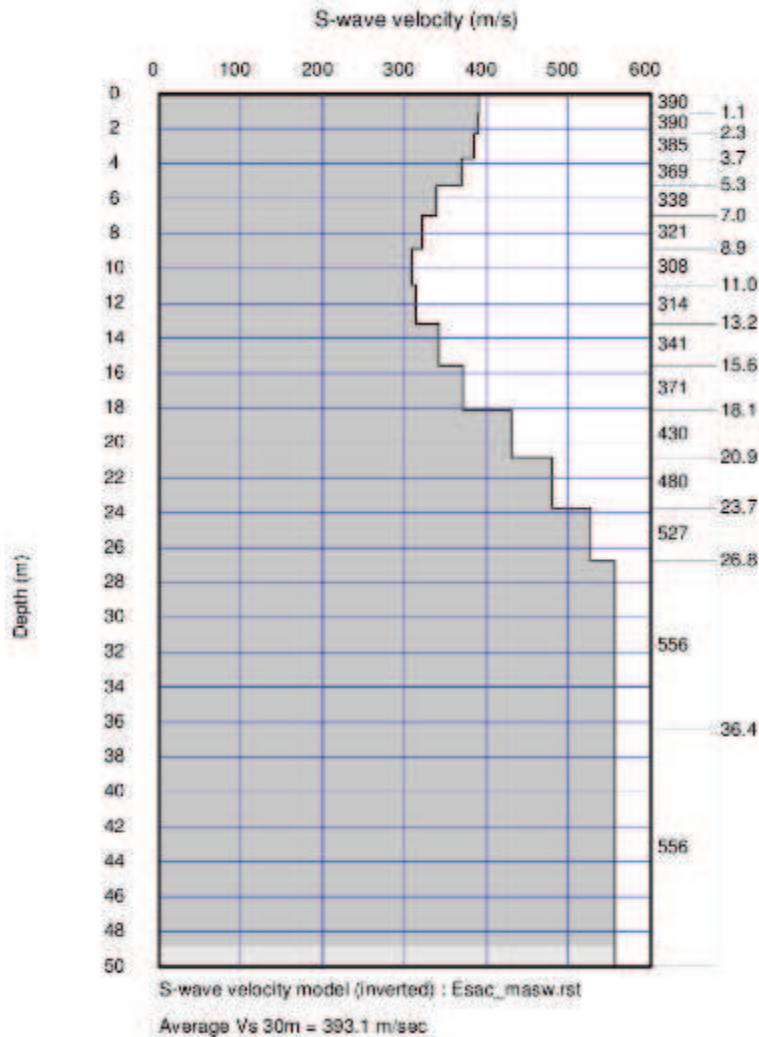


Curva di dispersione (Masw)

Profilo ESAC-Masw ST29 – Veneri



Curva di dispersione congiunta Esac-Masw



Ricostruzione stratigrafica indicativa
 congiunta Esac-Masw