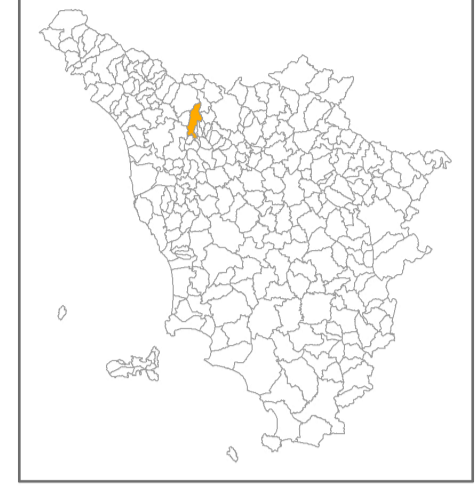


MICROZONAZIONE SISMICA

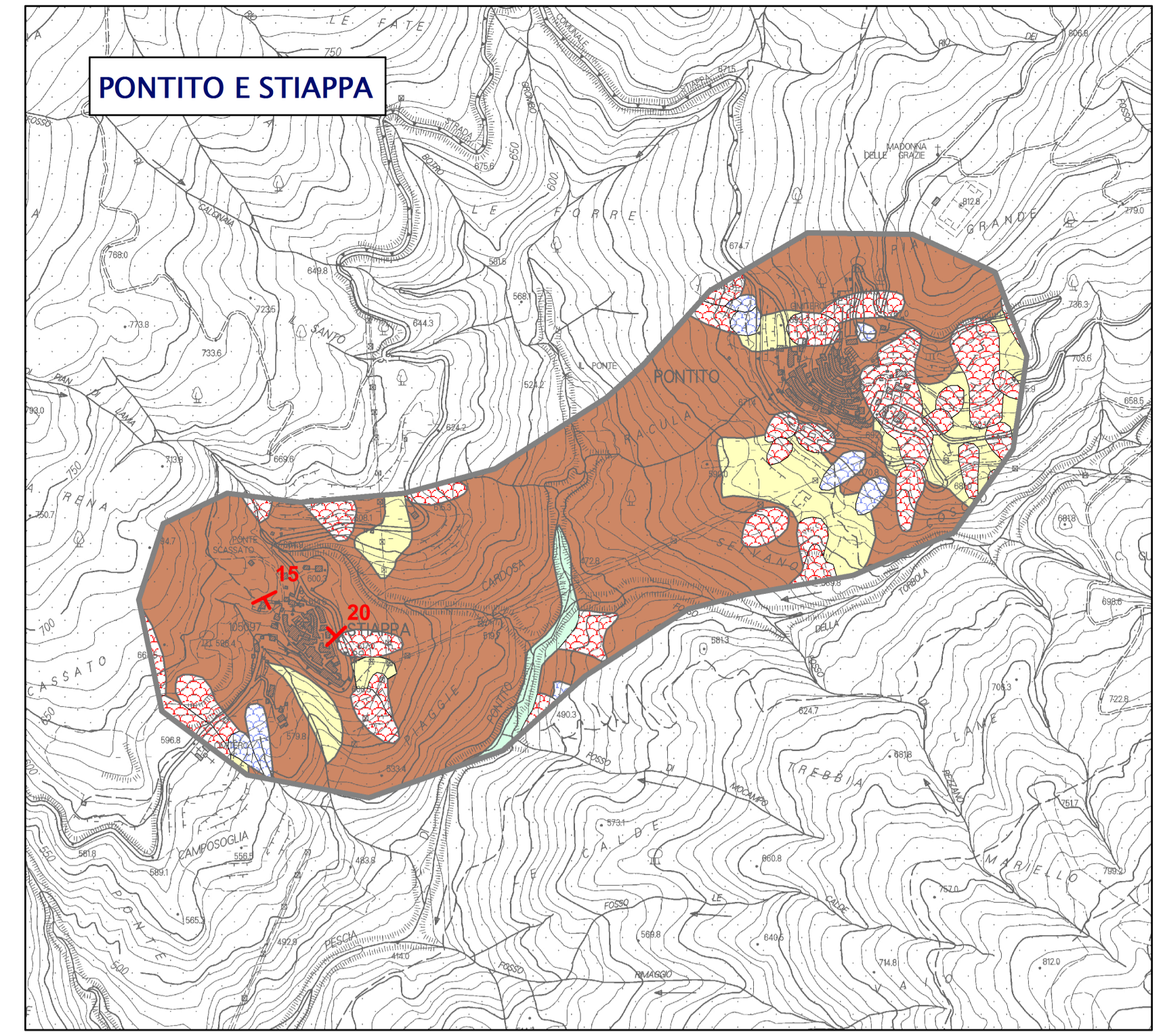
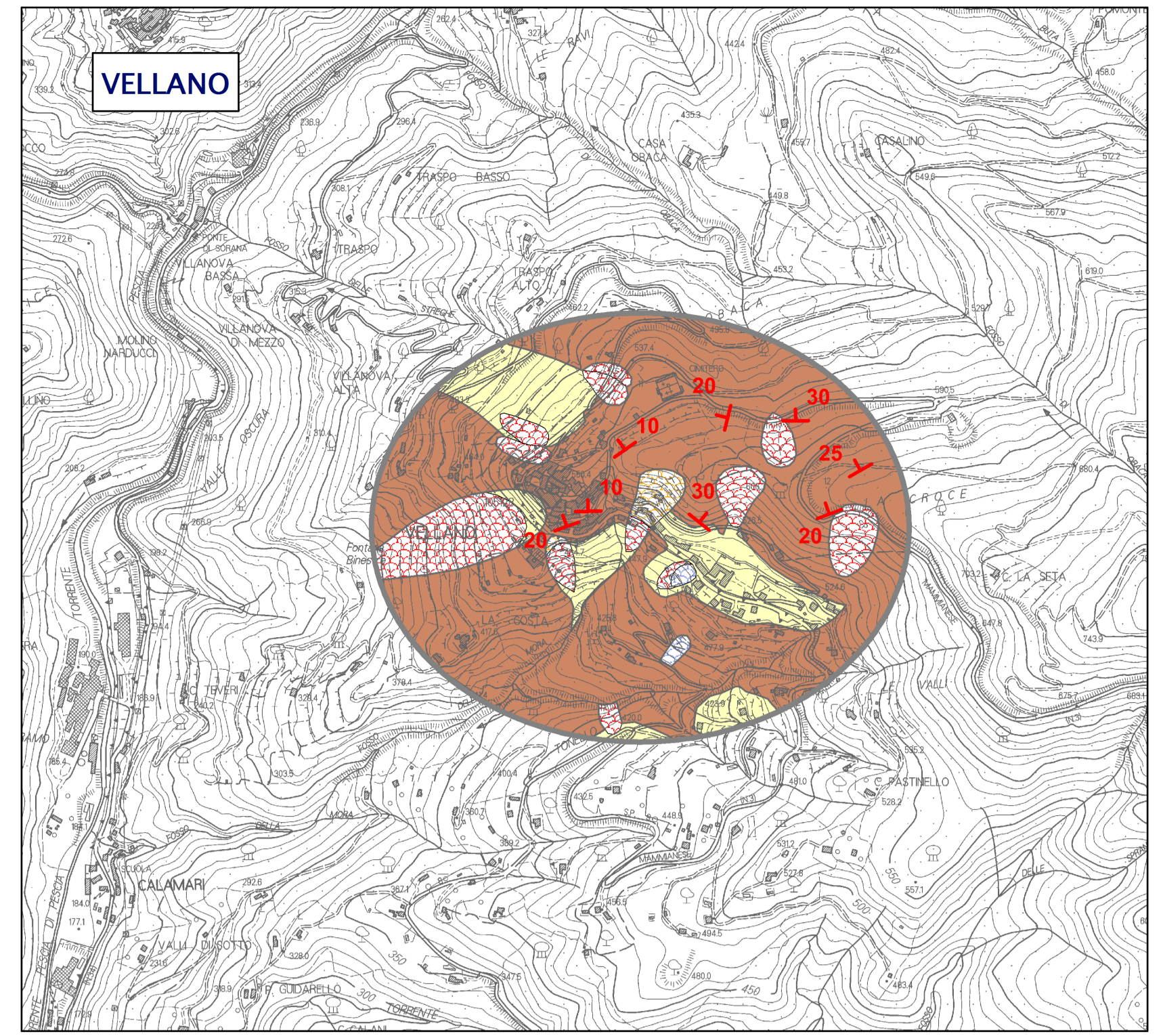
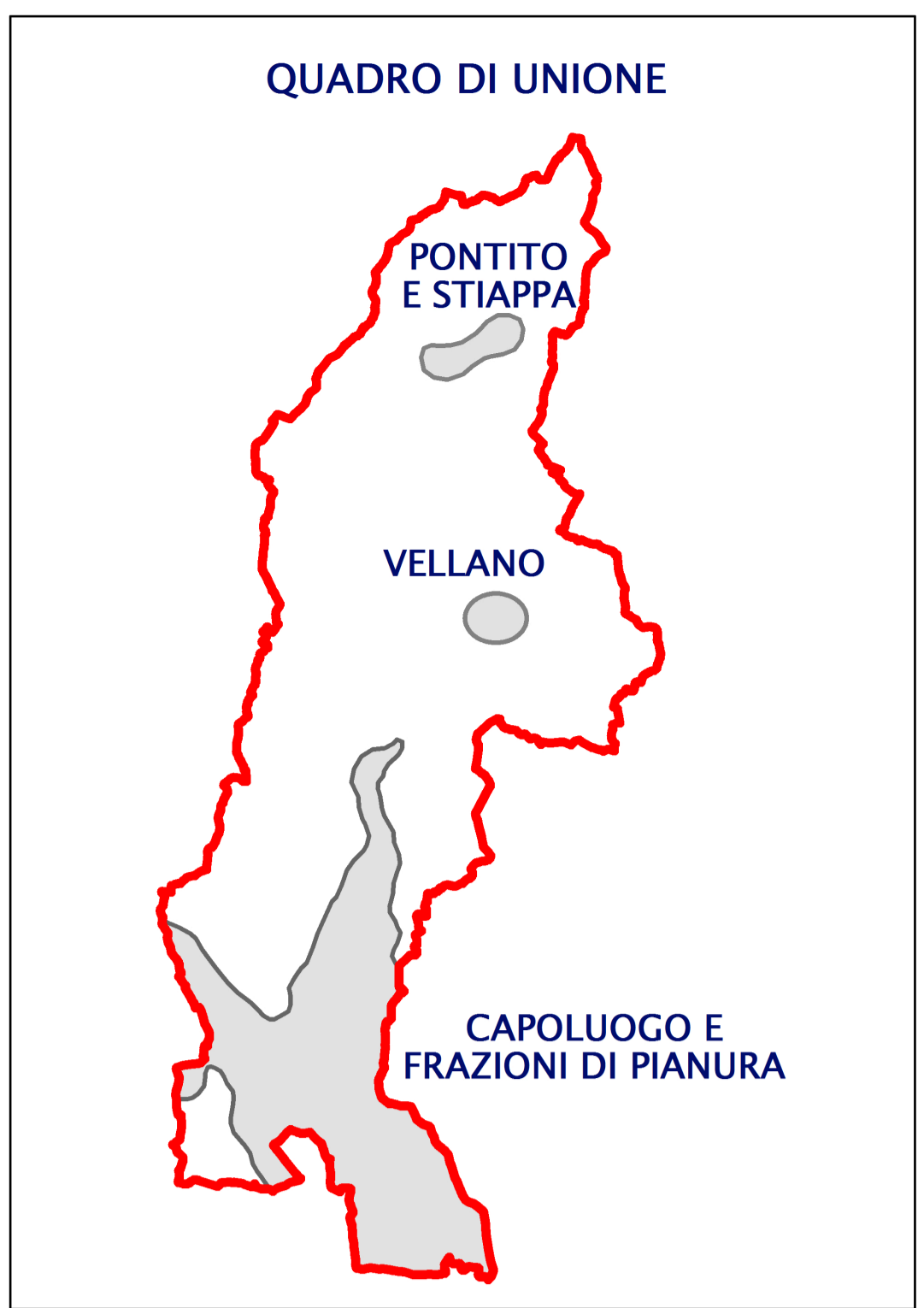
Carta geologica e geomorfologica

scala 1:10.000


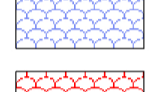
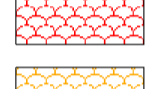

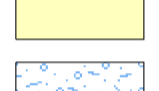










Regione Toscana
Comune di Pescia

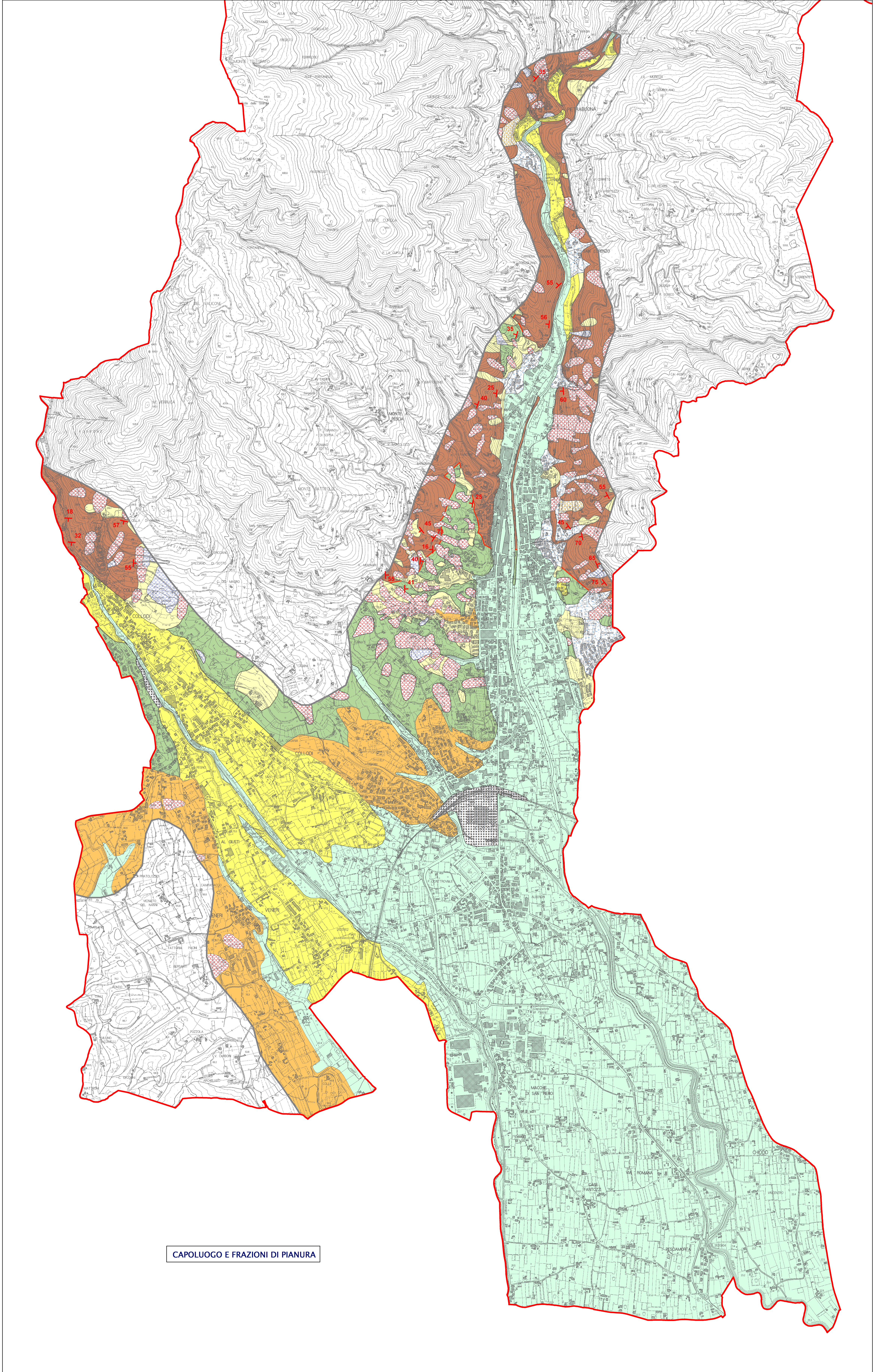
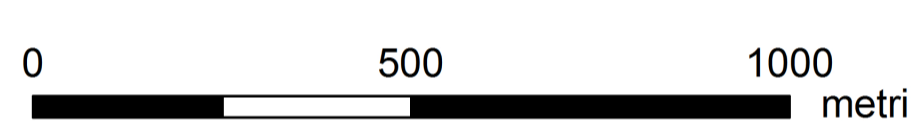


Regione	Toscana	Soggetto realizzatore	DREAM Italia	Data	Giugno 2015
Comune	Pescia	Indagini Sismiche	Mannori & Burchiotti Geologi Associati		



Legenda

-  Riporto
-  Frane attive
-  Frane quiescenti
-  Frane inattive
-  Depositi detritici
-  Conoide
-  Depositi alluvionali attuali e recenti
-  Depositi alluvionali terrazzati
-  Argille e sabbie di Marginone-Mastromarco
-  Macigno
-  Sillano
-  Misure di strato
-  Contatti tettonici
-  Aree trattate
-  Limite di comune



CAPOLUOGO E FRAZIONI DI PIANURA